

**REPLAT No. 2  
MACOMB COUNTY CONDOMINIUM  
SUBDIVISION PLAN NO. 523**

**EXHIBIT B TO MASTER DEED OF  
LIBERTY WOODS  
WASHINGTON TOWNSHIP, MACOMB COUNTY, MICHIGAN**

ATTENTION COUNTY REGISTRAR OF DEEDS  
CONDOMINIUM SUBDIVISION PLAN NUMBER SHALL BE  
NUMBERED CONSECUTIVELY WHEN RECORDED BY THE  
REGISTRAR OF DEEDS AND SHALL BE DESIGNATED  
MACOMB COUNTY CONDOMINIUM SUBDIVISION PLAN  
NUMBER 523. THIS NUMBER MUST BE PROPERLY  
SHOWN ON THIS SHEET AND ON SHEET 2 IN THE  
SURVEYORS CERTIFICATE.

LEGAL DESCRIPTION

Part of the northwest 1/4 of Section 35, T.4N., R.12E., Washington Township, Macomb County, Michigan describes as:  
Part of Lots 9 and 10, and all of Lots 13 through 18 inclusive, and the vacated portions of Chadwick Avenue, Gernt Avenue, Clemens Avenue, Pursell Avenue and Hatheway Avenue of "Newell's Garden Acres" subdivision as recorded in Liber 9, Page 76 of Macomb County Records, being more particularly described as:  
Beginning at the Northwest corner of said Lot 13; thence N.89°13'00"E., along the South right-of-way line of said Pursell Avenue, 600.03 feet; thence N.00°35'32"E., 300.99 feet; thence N.86°15'55"E., 151.91 feet; thence S.78°01'00"E., 153.80 feet; thence S.87°00'46"E., 225.48 feet; thence S.00°47'00"E., 259.91 feet; thence N.89°13'00"E., 156.27 feet; thence N.00°47'00"W., 30.00 feet; thence N.89°13'00"E., 651.19 feet; S.00°07'44"E., 677.14 feet to a point on the North line of "Woodland Acres Subdivision" as recorded in Liber 34, Page 39 of Macomb County Records; thence S.89°28'02"W., along said North line of "Woodland Acres Subdivision", 1948.00 feet to a point on the East right-of-way line of Jewell Road; thence N.00°30'00"E., along said East right-of-way line of Jewel Road, 638.74 feet to the Point of Beginning. Containing 32.62 acres of land and subject to all easements and restrictions of record.

INDEX

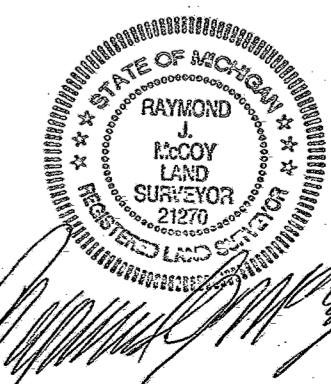
- \* 1. TITLE, DESCRIPTION
- \* 2. SURVEY PLAN
- \* 3. UTILITY PLAN (WEST)
- \* 4. UTILITY PLAN (EAST)
- \* 5. SITE PLAN (WEST)
- \* 6. SITE PLAN (EAST)
- \* 7. SITE PLAN (NORTH)
- \* 8. UNIT DATA
- \* 9. COORDINATE PLAN (WEST)
- \* 10. COORDINATE PLAN (EAST)
- \* 11. COORDINATE PLAN (NORTH)
- \* 12. COORDINATE LIST
- \* AMENDED DATE: JANUARY 3, 2005

**PROPRIETOR**

**TOWN SQUARE ASSOCIATES, LLC  
43494 WOODWARD AVENUE  
SUITE 207  
BLOOMFIELD HILLS, MICHIGAN 48302  
(248) 322-2720**

**SURVEYOR**

**MICKALICH and ASSOCIATES, INC.  
2359 AVON INDUSTRIAL DRIVE  
ROCHESTER HILLS, MICHIGAN 48309  
(248) 852-1900**

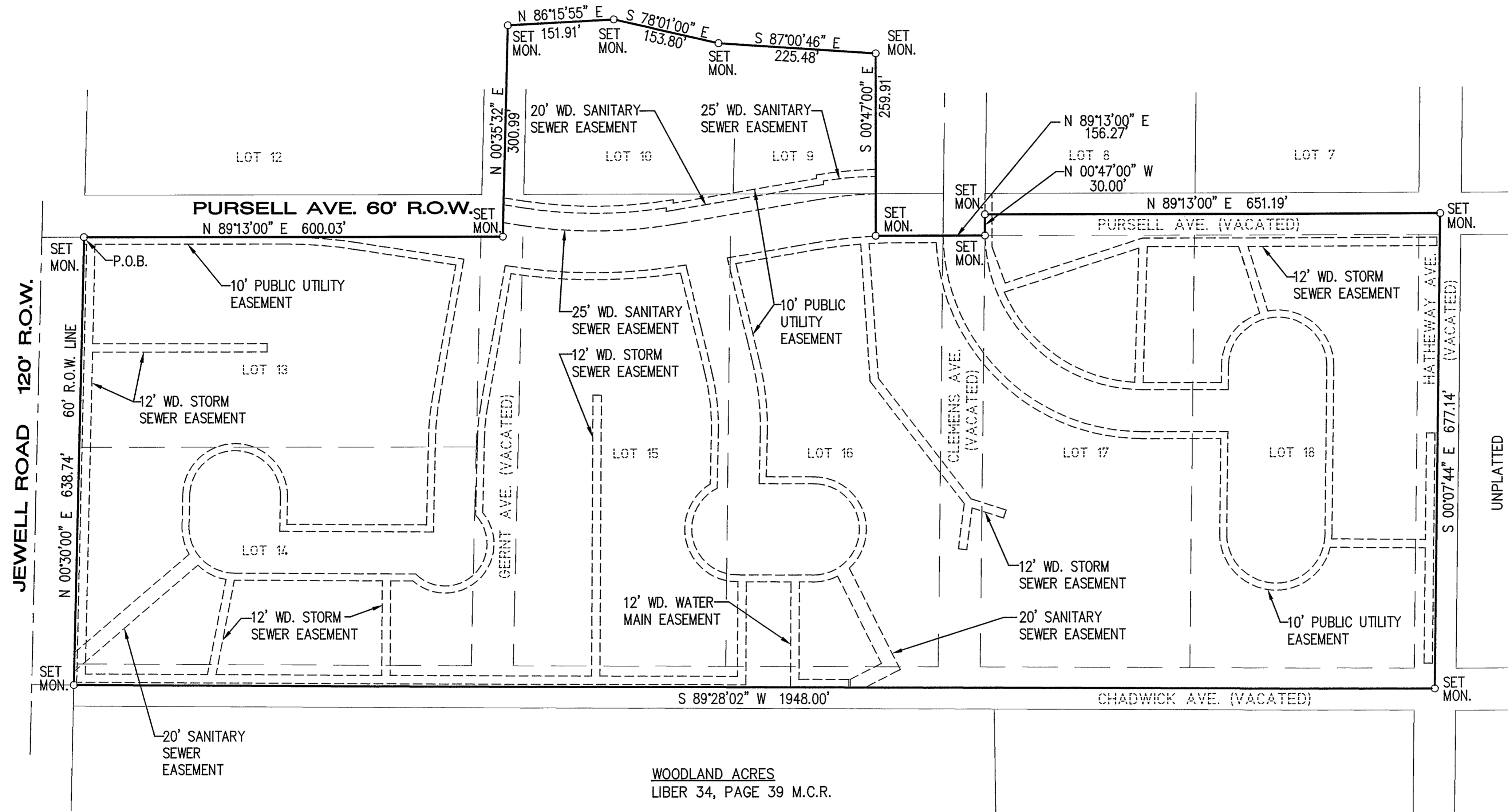


# LIBERTY WOODS

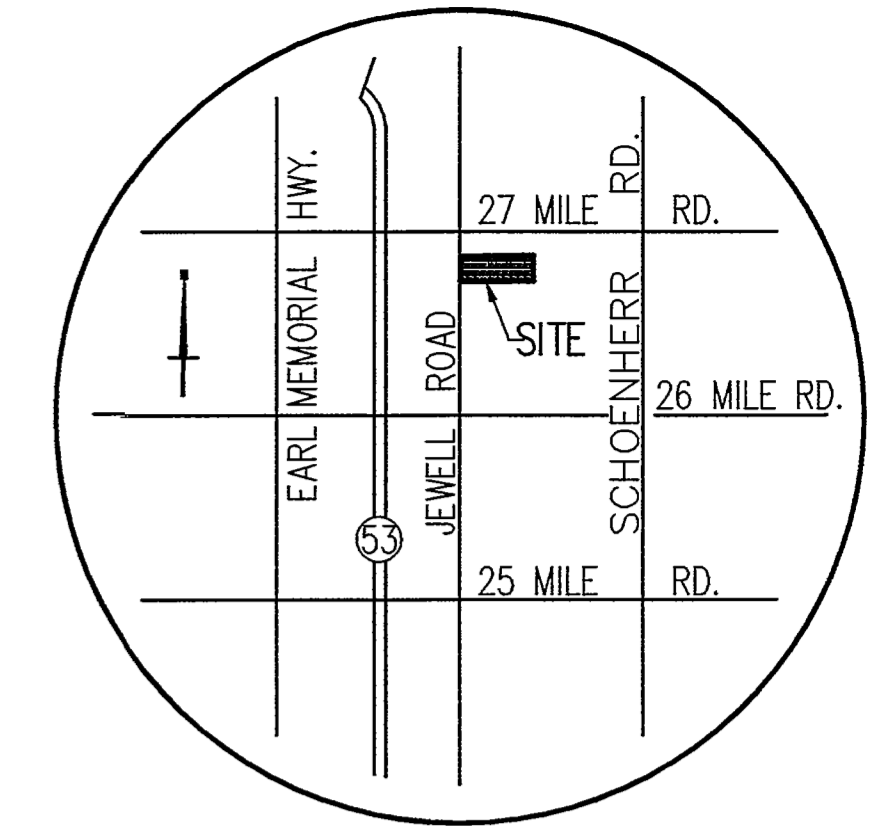
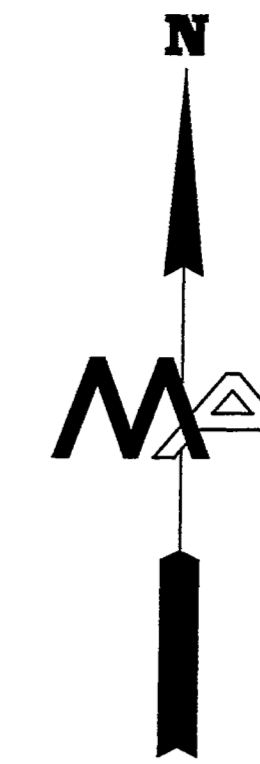
WASHINGTON TOWNSHIP,  
MCOMB COUNTY, MICHIGAN

NEWELL'S GARDEN ACRES  
LIBER 9, PAGE 76 M.C.R.

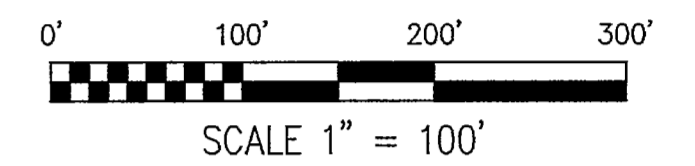
WOODLAND ACRES  
LIBER 34, PAGE 39 M.C.R.



BEARINGS SYSTEM BASED ON  
"NEWELL'S GARDEN ACRES"  
LIBER 9, PAGE 76 M.C.R.



LOCATION MAP  
NO SCALE



I, RAYMOND J. MCCOY, REGISTERED LAND SURVEYOR OF THE STATE OF MICHIGAN, HEREBY CERTIFY: THAT THE SUBDIVISION PLAN KNOWN AS MACOMB COUNTY CONDOMINIUM SUBDIVISION PLAN No. 523 AS SHOWN ON THE ACCOMPANYING DRAWINGS, REPRESENTS A SURVEY ON THE GROUND MADE UNDER MY DIRECTION, THAT THERE ARE NO EXISTING ENCROACHMENTS UPON THE LANDS AND PROPERTY HEREIN DESCRIBED, THAT THE REQUIRED MONUMENTS AND IRON MARKERS HAVE BEEN LOCATED IN THE GROUND AS REQUIRED BY RULES PROMULGATED UNDER SECTION 142 OF ACT NUMBER 59 OF THE PUBLIC ACTS OF 1978, THAT THE ACCURACY OF THIS SURVEY IS WITHIN THE LIMITS REQUIRED BY THE RULES PROMULGATED UNDER SECTION 142 OF ACT NUMBER 59 OF THE PUBLIC ACTS OF 1978, THAT THE BEARINGS, AS SHOWN, ARE NOTED ON SURVEY PLAN AS REQUIRED BY THE RULES PROMULGATED UNDER SECTION 142 OF ACT NUMBER 59 OF THE PUBLIC ACTS OF 1978.

*Raymond J. McCoy*  
RAYMOND J. MCCOY, REGISTERED LAND SURVEYOR DATE 1-17-05  
NUMBER: 21270  
MICKALICH & ASSOCIATES, INC.  
2359 AVON INDUSTRIAL DRIVE  
ROCHESTER HILLS, MICHIGAN 48309

©2005

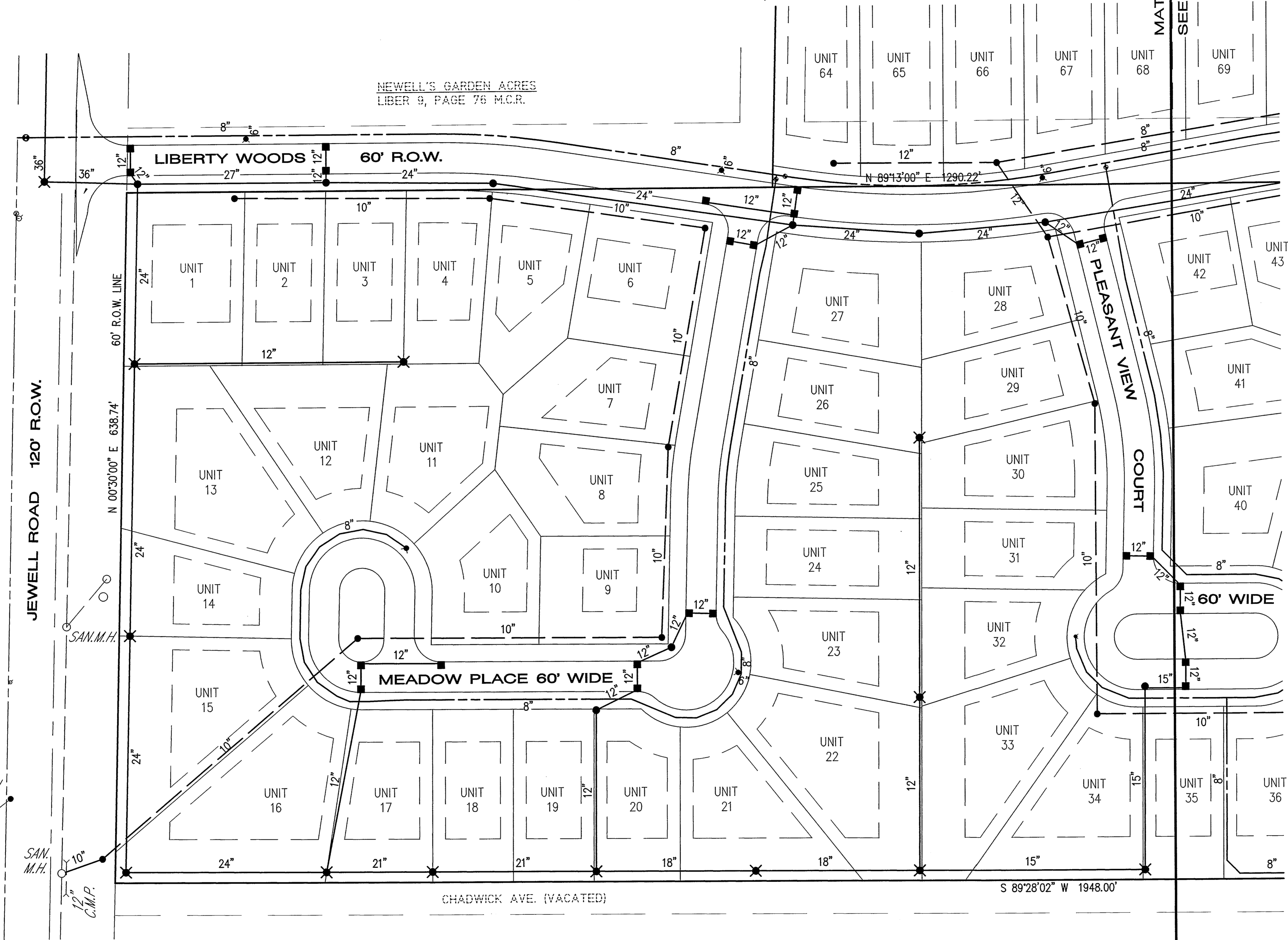
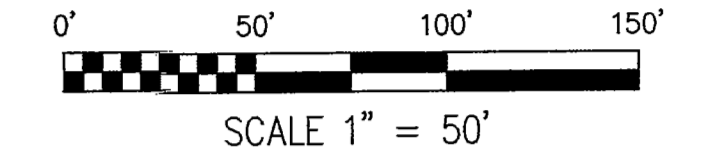
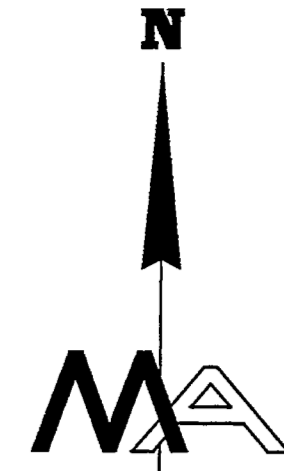
	<b>MICKALICH and ASSOCIATES, INC.</b> CIVIL ENGINEERING SURVEYING PLANNING 2359 AVON INDUSTRIAL DR, ROCHESTER HILLS, MI. 48309 INTERNET: WWW.MICKALICH.COM PHONE: (248) 852-1900 FAX: (248) 852-1070		
	PROJECT <b>LIBERTY WOODS</b>	DRAWN BY: JWJ CHECKED BY: RH APPROVED BY: A.P.M.	DATE JULY 17, 1995
TITLE <b>SURVEY PLAN</b>	SCALE Horizontal 1" = 100' Vertical	PROJECT No. <b>94052</b>	
CLIENT <b>TOWN SQUARE ASSOCIATES, LLC</b>	SHEET No. <b>2</b>		

DATE AMENDED: JANUARY 3, 2005

# LIBERTY WOODS

WASHINGTON TOWNSHIP, MACOMB COUNTY, MICHIGAN

NEWELL'S GARDEN ACRES  
LIBER 9, PAGE 76 M.C.R.



### LEGEND

- EX. STORM SEWER
- PROPOSED STORM SEWER
- EX. SANITARY SEWER
- PROPOSED SANITARY SEWER
- EX. WATER MAIN
- PROPOSED WATER MAIN
- EX. MANHOLE
- PR. MANHOLE
- EX. CATCH BASIN
- PR. CATCH BASIN
- EX. HYDRANT
- PR. HYDRANT
- EX. GATE VALVE
- PR. GATE VALVE

### NOTES

1. ALL UNITS TO BE SERVICE BY SANITARY SEWER, WATER MAIN AND STORM SEWER.
2. TRUNK LINES FOR ELECTRIC, GAS AND TELEPHONE MUST BE BUILT; INDIVIDUAL SERVICES NEED NOT BE BUILT.
3. EXISTING UTILITY INFORMATION OBTAINED FROM WASHINGTON TOWNSHIP RECORDS, DETROIT EDISON CO. MICHIGAN BELL TELEPHONE, CONSUMERS POWER GAS COMPANY AND FIELD INSPECTION.
4. SANITARY SEWER, STORM SEWER AND WATER MAIN AS SHOWN "MUST BE BUILT".
5. WATER SERVICE LEADS WILL BE SHOWN ON AS-BUILT DRAWINGS.
6. GAS, TELEPHONE, ELECTRIC AND CABLE TV SERVICE WILL BE SHOWN ON AS-BUILT DRAWINGS.

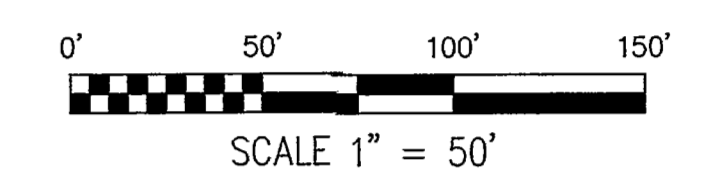
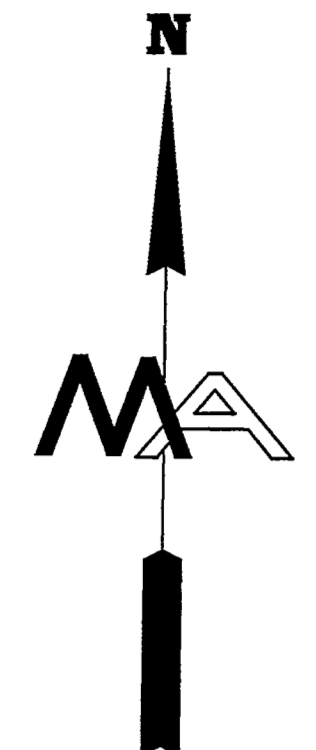
WOODLAND ACRES  
LIBER 34, PAGE 39 M.C.R.

©2005

	<b>MICKALICH and ASSOCIATES, INC.</b> CIVIL ENGINEERING SURVEYING PLANNING	
	2359 AVON INDUSTRIAL DR. ROCHESTER HILLS, MI. 48309 INTERNET: WWW.MICKALICH.COM PHONE: (248) 852-1800 FAX: (248) 852-1070	
PROJECT: <b>LIBERTY WOODS</b>	DRAWN BY: JWJ CHECKED BY: RH APPROVED BY: APM	DATE: JULY 17, 1995 PROJECT No.: <b>9452</b> SHEET No.: <b>3</b>
TITLE: <b>UTILITY PLAN (WEST HALF)</b>		SCALE: Horizontal 1" = 50' Vertical _____
CLIENT: <b>TOWN SQUARE ASSOCIATES, LLC</b>		DATE AMENDED: JANUARY 3, 2005

# LIBERTY WOODS

WASHINGTON TOWNSHIP, MACOMB COUNTY, MICHIGAN

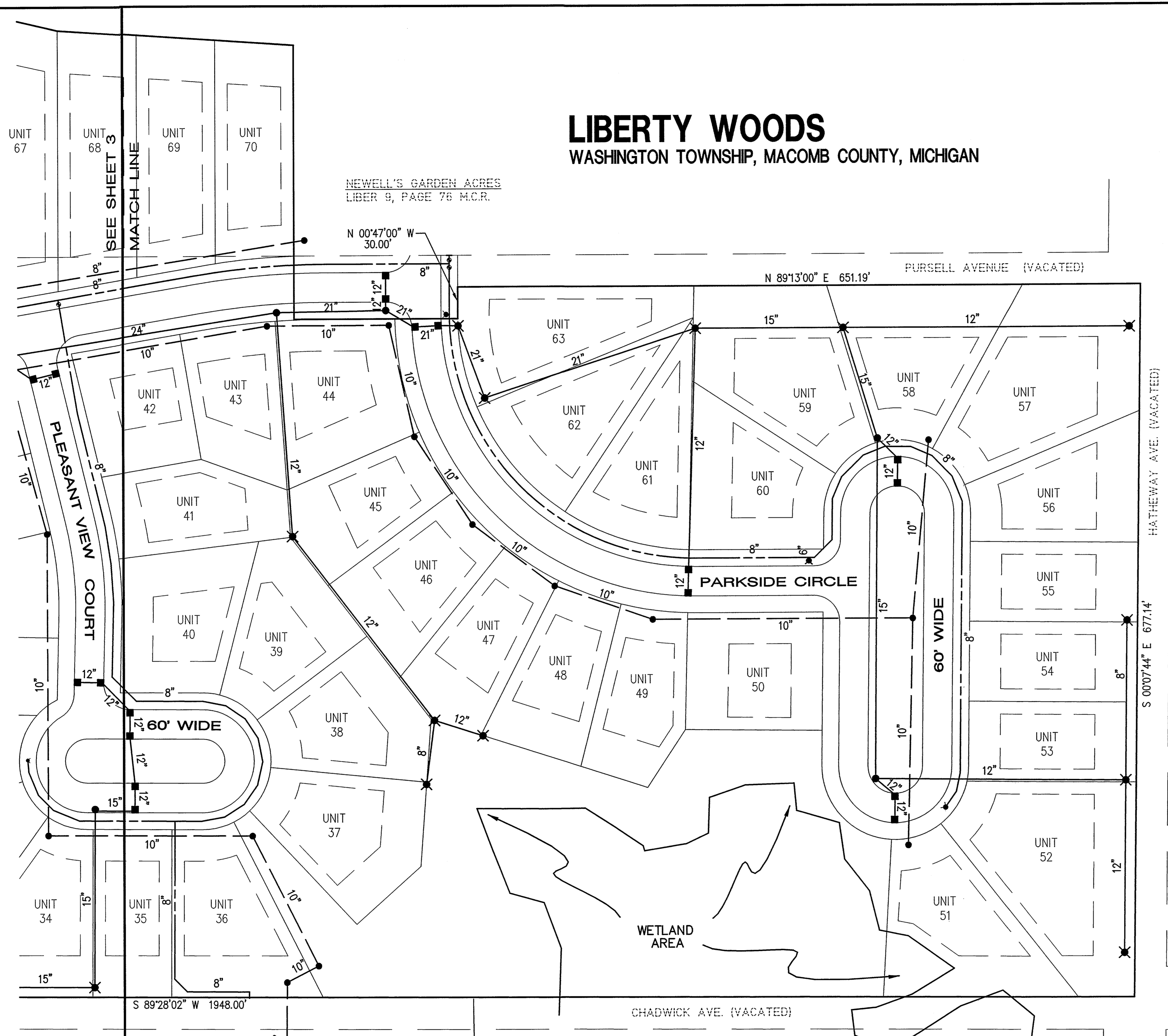


### LEGEND

- EX. STORM SEWER
- PROPOSED STORM SEWER
- EX. SANITARY SEWER
- PROPOSED SANITARY SEWER
- EX. WATER MAIN
- PROPOSED WATER MAIN
- EX. MANHOLE
- PR. MANHOLE
- EX. CATCH BASIN
- PR. CATCH BASIN
- EX. HYDRANT
- PR. HYDRANT
- EX. GATE VALVE
- PR. GATE VALVE

### NOTES

1. ALL UNITS TO BE SERVICE BY SANITARY SEWER, WATER MAIN AND STORM SEWER.
2. TRUNK LINES FOR ELECTRIC, GAS AND TELEPHONE MUST BE BUILT; INDIVIDUAL SERVICES NEED NOT BE BUILT.
3. EXISTING UTILITY INFORMATION OBTAINED FROM WASHINGTON TOWNSHIP RECORDS, DETROIT EDISON CO. MICHIGAN BELL TELEPHONE, CONSUMERS POWER GAS COMPANY AND FIELD INSPECTION.
4. SANITARY SEWER, STORM SEWER AND WATER MAIN AS SHOWN "MUST BE BUILT".
5. SANITARY SEWER SERVICE LEADS ARE 6". WATER SERVICE LEADS WILL BE SHOWN ON AS-BUILT DRAWINGS.
6. GAS, TELEPHONE, ELECTRIC AND CABLE TV SERVICE WILL BE SHOWN ON AS-BUILT DRAWINGS.



UNPLATTED

NEWELL'S GARDEN ACRES  
LIBER 9, PAGE 76 M.C.R.

WOODLAND ACRES  
LIBER 34, PAGE 39 M.C.R.

©2005

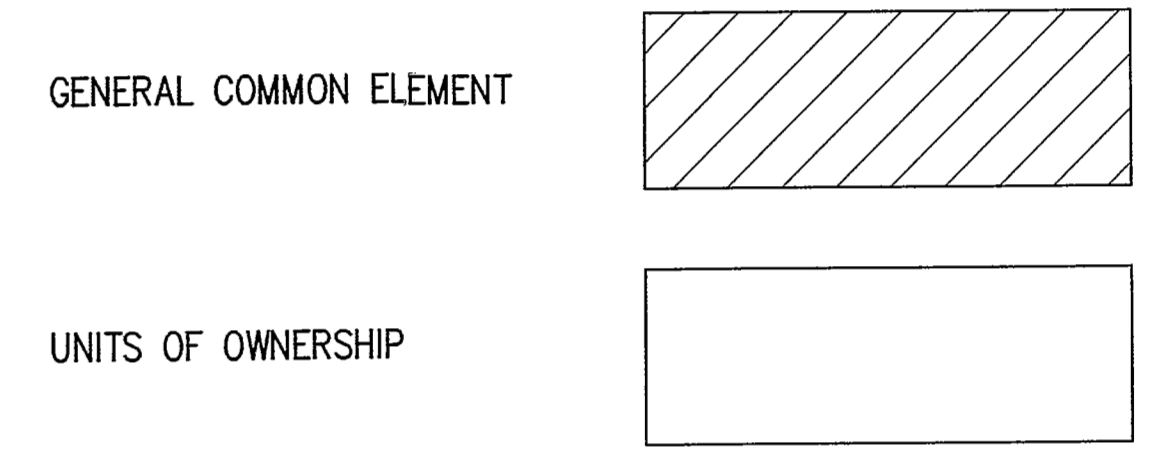
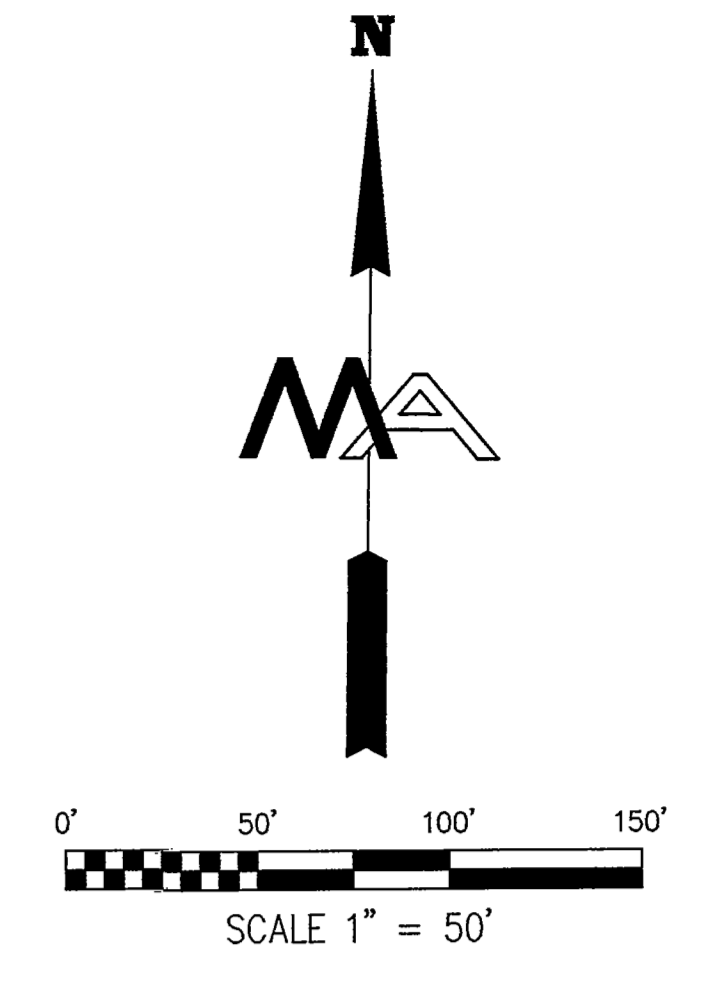
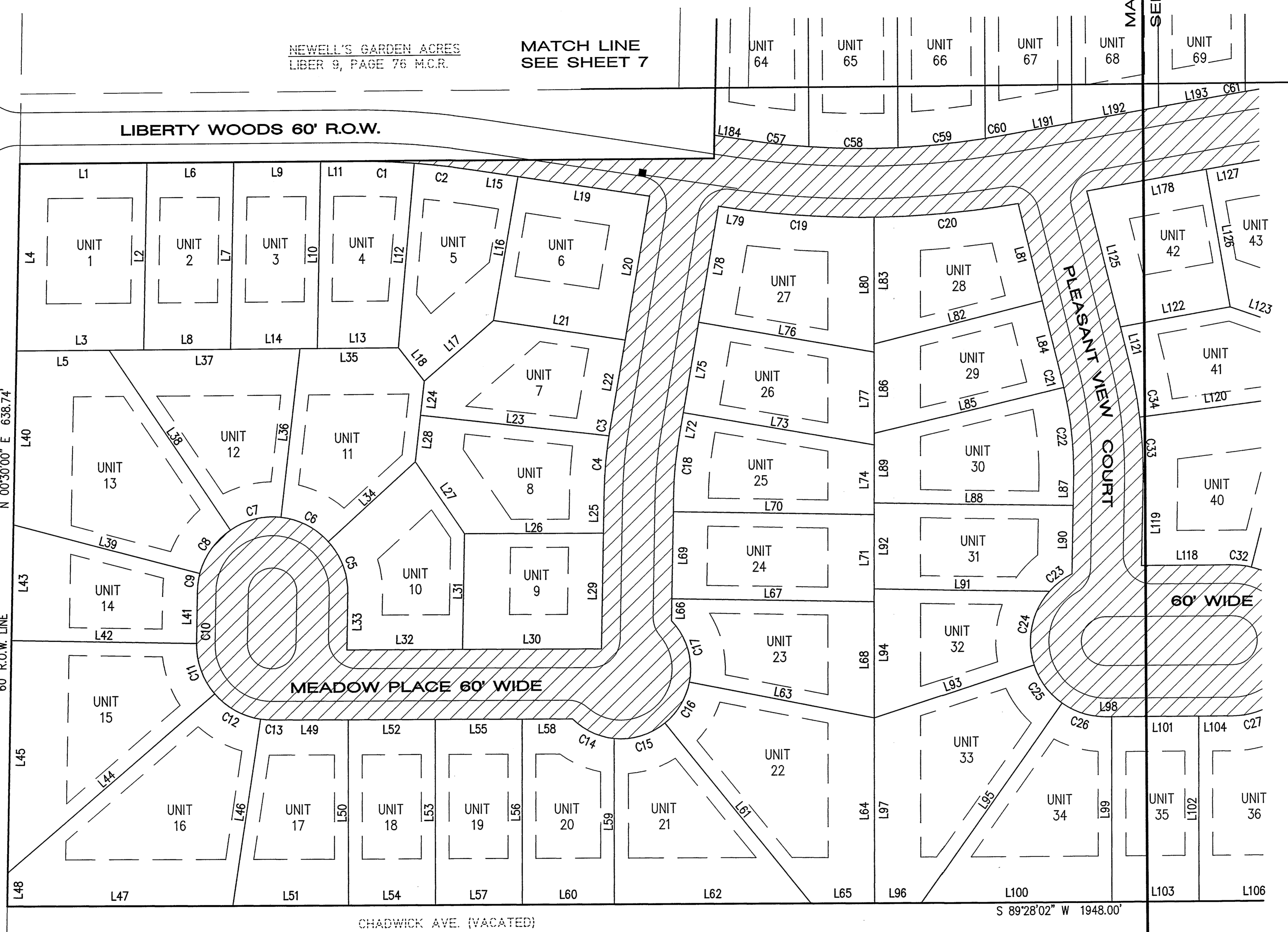
	<b>MICKALICH and ASSOCIATES, INC.</b> CIVIL ENGINEERING SURVEYING PLANNING 2359 AVON INDUSTRIAL DR, ROCHESTER HILLS, MI. 48309 INTERNET: WWW.MICKALICH.COM PHONE: (248) 852-1900 FAX: (248) 852-1070	
	<b>PROJECT LIBERTY WOODS</b>	
DATE JULY 17, 1995	DRAWN BY: J.W.J. CHECKED BY: R.H. APPROVED BY: A.P.M.	PROJECT No. <b>9452</b>
<b>TITLE UTILITY PLAN (EAST HALF)</b>		SHEET No. <b>4</b>
<b>CLIENT TOWN SQUARE ASSOCIATES, LLC</b>		
SCALE: Horizontal 1" = 50' Vertical _____		
DATE AMENDED: JANUARY 3, 2005		

# LIBERTY WOODS

WASHINGTON TOWNSHIP, MACOMB COUNTY, MICHIGAN

JEWELL ROAD 120' R.O.W.

60' R.O.W. LINE N 00°30'00" E 638.74'



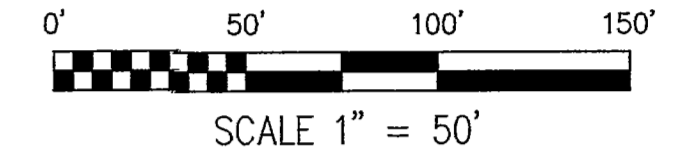
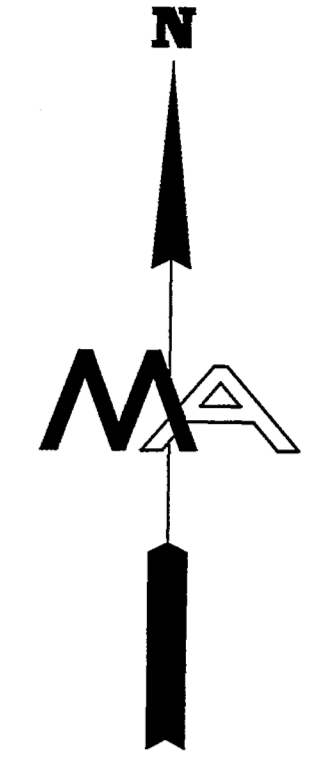
© 2005

	<b>MICKALICH and ASSOCIATES, INC.</b> CIVIL ENGINEERING SURVEYING PLANNING 2359 AVON INDUSTRIAL DR., ROCHESTER HILLS, MI 48309 INTERNET: WWW.MICKALICH.COM PHONE: (248) 852-1900 FAX: (248) 852-1070	
	PROJECT <b>LIBERTY WOODS</b>	
TITLE <b>SITE PLAN (WEST HALF)</b>	DRAWN BY: <b>JWJ</b> CHECKED BY: <b>RH</b> APPROVED BY: <b>A.P.M.</b>	DATE <b>JULY 17, 1995</b> PROJECT No. <b>9452</b>
CLIENT <b>TOWN SQUARE ASSOCIATES, LLC</b>	SCALE: Horizontal 1" = 50' Vertical _____	SHEET No. <b>5</b>

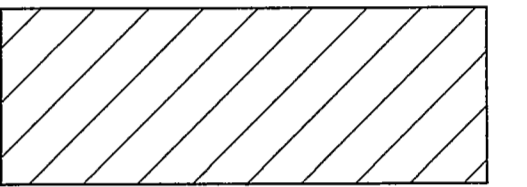
DATE AMENDED: JANUARY 3, 2005

# LIBERTY WOODS

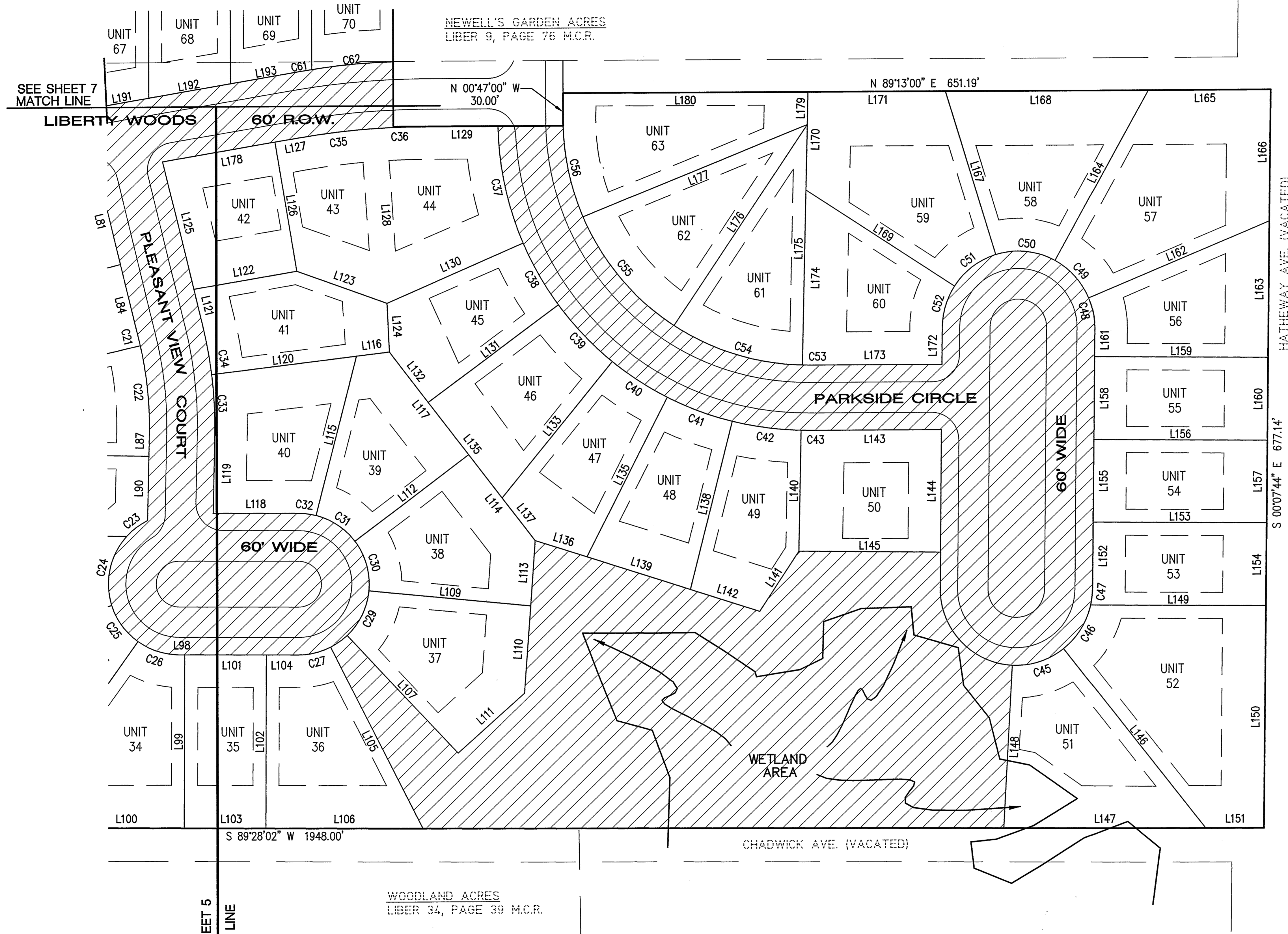
WASHINGTON TOWNSHIP, MACOMB COUNTY, MICHIGAN



GENERAL COMMON ELEMENT



UNITS OF OWNERSHIP



UNPLATTED

©2005



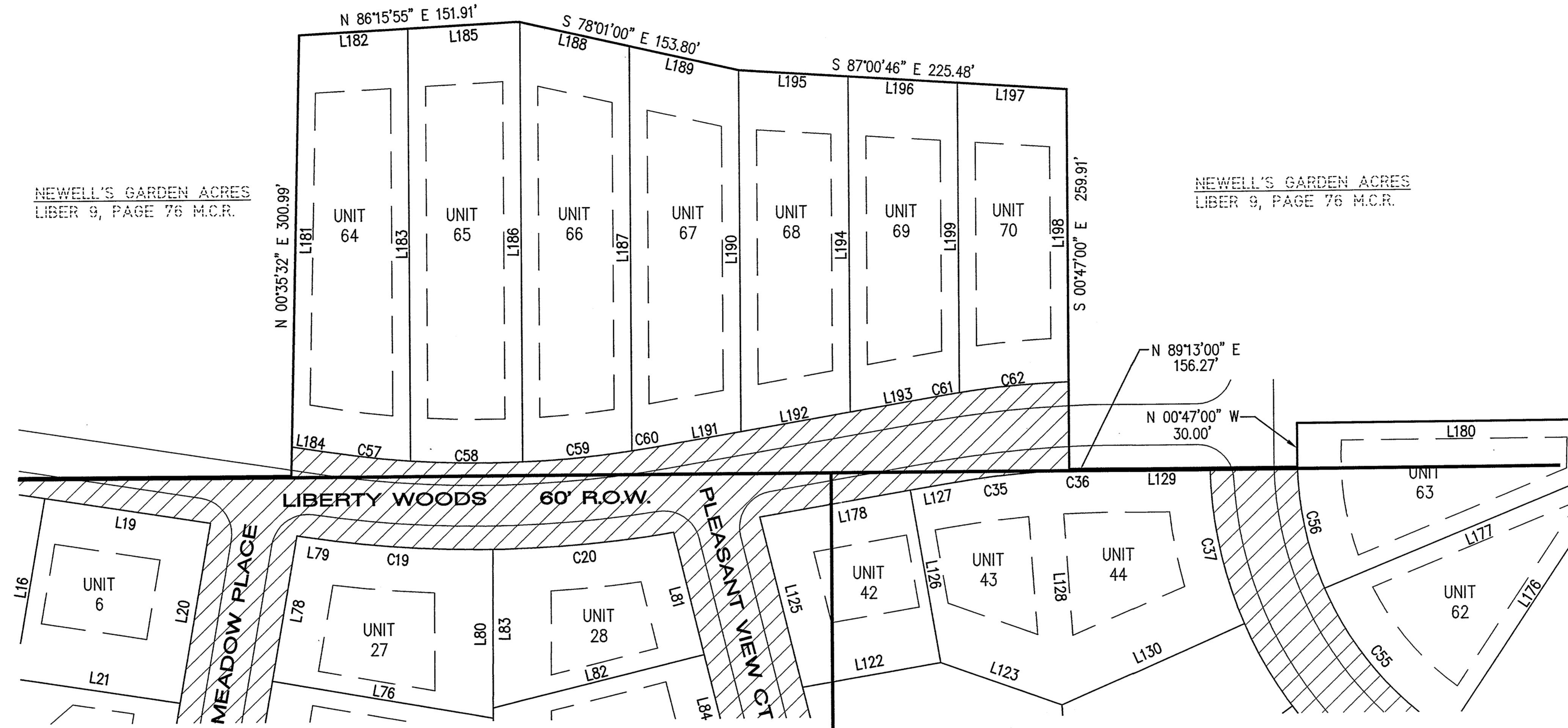
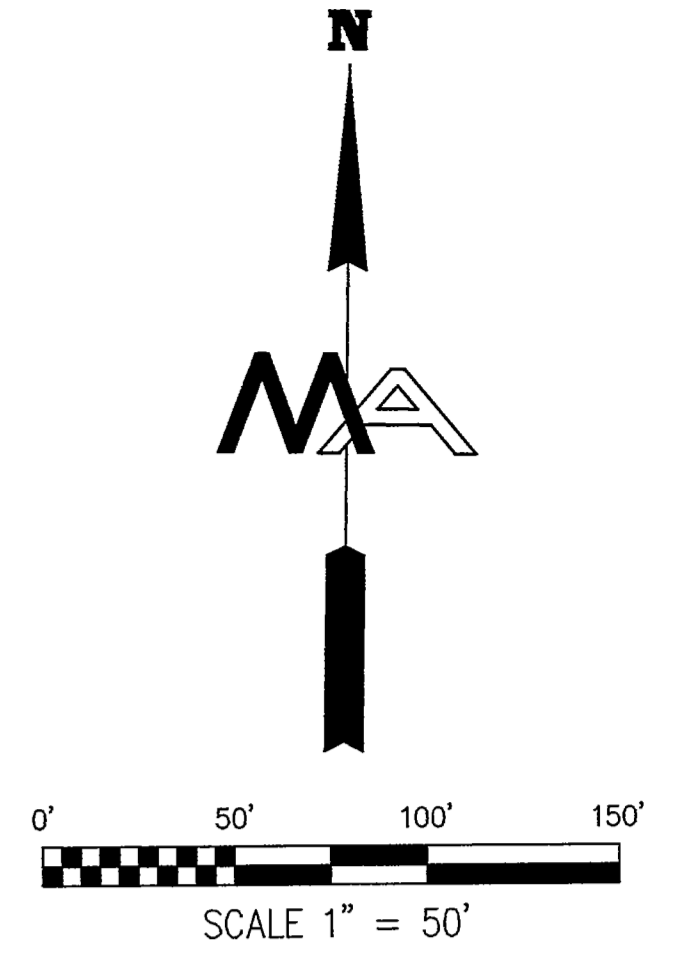
<b>MICKALICH and ASSOCIATES, INC.</b>		CIVIL ENGINEERING SURVEYING PLANNING	
2359 AVON INDUSTRIAL DR., ROCHESTER HILLS, MI. 48309		PHONE: (248) 852-1900 FAX: (248) 852-1070	
PROJECT: LIBERTY WOODS		DRAWN BY: JWJ	DATE: JULY 17, 1995
TITLE: SITE PLAN (EAST HALF)		CHECKED BY: RH	PROJECT No. 9452
CLIENT: TOWN SQUARE ASSOCIATES, LLC		APPROVED BY: APM	SHEET No. 6
SCALE: Horizontal 1" = 50' Vertical			

DATE AMENDED: JANUARY 5, 2005

06-site.plt - 1/6/05, Time: 09:55 AM -

# LIBERTY WOODS

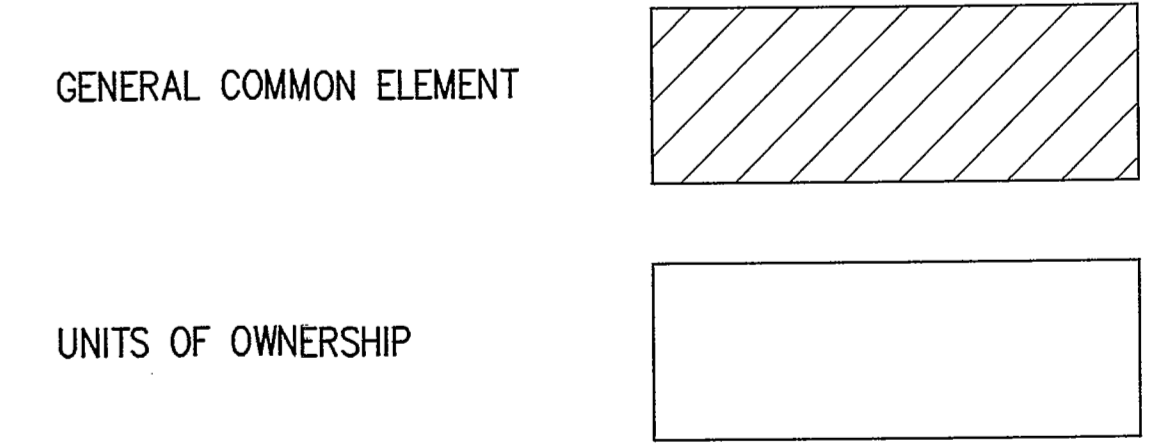
WASHINGTON TOWNSHIP, MACOMB COUNTY, MICHIGAN



NEWELL'S GARDEN ACRES  
LIBER 9, PAGE 76 M.C.R.

NEWELL'S GARDEN ACRES  
LIBER 9, PAGE 76 M.C.R.

MATCH LINE SEE SHEET 5  
MATCH LINE SEE SHEET 6



©2005

	<b>MICKALICH and ASSOCIATES, INC.</b> CIVIL ENGINEERING SURVEYING PLANNING 2359 AVON INDUSTRIAL DR, ROCHESTER HILLS, MI 48309 INTERNET: WWW.MICKALICH.COM PHONE: (248) 852-1900 FAX: (248) 852-1070		
	PROJECT <b>LIBERTY WOODS</b>	DRAWN BY: J.W.J. CHECKED BY: R.H. APPROVED BY: A.P.M.	DATE: JULY 17, 1995 PROJECT No.: <b>9452</b>
TITLE <b>SITE PLAN (NORTH)</b>	CLIENT <b>TOWN SQUARE ASSOCIATES, LLC</b>	SCALE: Horizontal: 1" = 50' Vertical:	SHEET No. <b>7</b>

DATE AMENDED: JANUARY 3, 2005

# LIBERTY WOODS

## WASHINGTON TOWNSHIP, MACOMB COUNTY, MICHIGAN

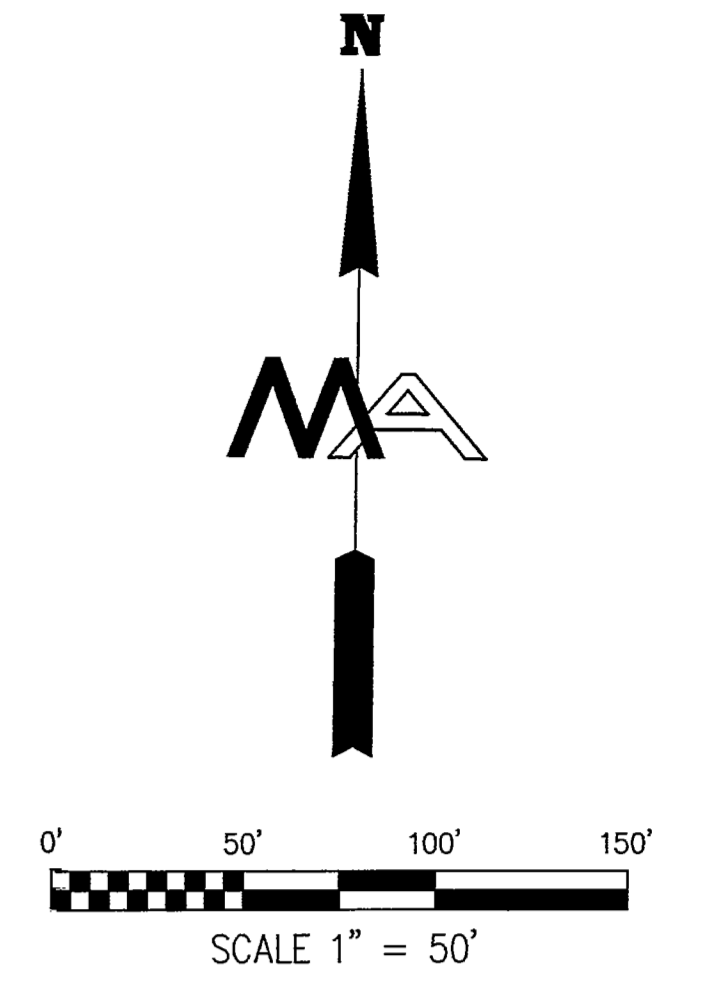
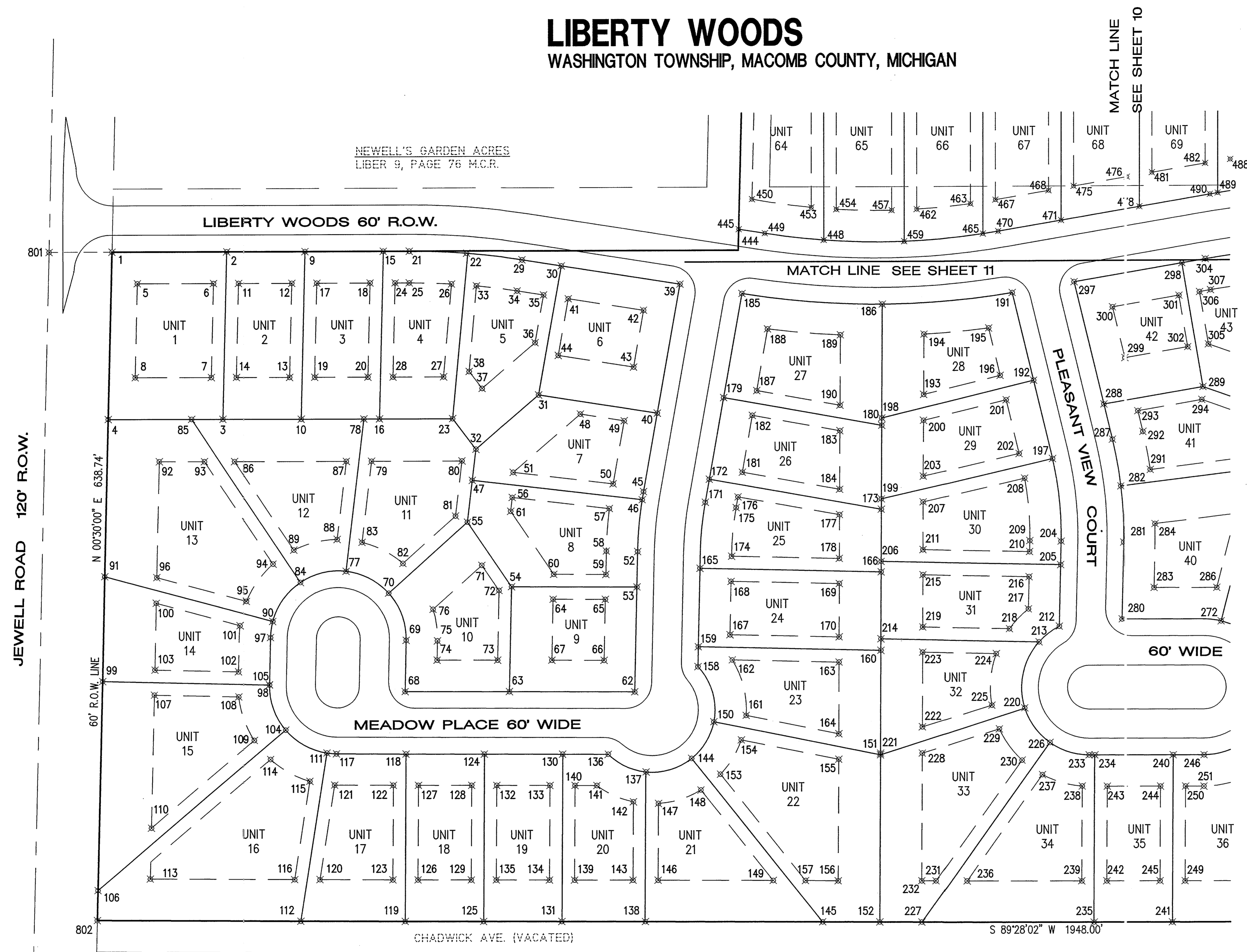
LINE#	BEARING	DISTANCE	LINE#	BEARING	DISTANCE	LINE#	BEARING	DISTANCE	LINE#	BEARING	DISTANCE
L1	N 89°13'00" E	110.00'	L61	N 39°30'00" W	200.48'	L121	S 14°28'29" E	34.46'	L181	N 00°35'32" E	281.08'
L2	N 00°30'00" E	160.00'	L62	N 89°28'02" E	170.00'	L122	N 79°35'49" E	96.25'	L182	N 86°15'55" E	74.81'
L3	N 89°13'00" E	110.00'	L63	N 79°25'20" W	162.72'	L123	N 71°06'06" W	88.12'	L183	S 00°47'00" E	295.33'
L4	S 00°30'00" W	160.00'	L64	S 00°30'00" E	159.60'	L124	N 03°33'50" W	44.61'	L184	N 81°49'11" W	25.31'
L5	N 89°13'00" E	80.00'	L65	N 89°28'02" E	54.65'	L125	S 14°28'29" E	120.30'	L185	N 86°15'55" E	77.10'
L6	S 89°13'00" W	75.02'	L66	N 00°30'00" E	18.96'	L126	N 10°24'11" W	120.00'	L186	S 00°47'00" E	300.70'
L7	N 00°30'00" E	160.00'	L67	N 89°30'00" W	174.75'	L127	S 79°35'49" W	22.69'	L187	S 00°47'00" E	276.77'
L8	N 89°13'00" E	75.02'	L68	N 00°30'00" W	100.00'	L128	N 04°38'36" W	160.40'	L188	S 78°01'00" E	76.90'
L9	S 89°13'00" W	75.02'	L69	N 00°30'00" E	74.99'	L129	S 89°13'02" W	66.09'	L189	S 78°01'00" E	76.90'
L10	N 00°30'00" E	160.00'	L70	N 89°30'00" W	173.44'	L130	N 65°44'59" E	136.69'	L190	S 00°47'00" E	247.19'
L11	S 89°13'00" W	24.86'	L71	N 00°30'00" W	75.00'	L131	N 52°52'10" E	149.18'	L191	N 79°34'00" E	61.15'
L12	N 04°30'00" E	158.38'	L72	N 09°13'51" E	22.35'	L132	S 38°21'15" E	58.23'	L192	N 79°34'00" E	76.07'
L13	N 89°13'00" E	69.96'	L73	N 80°46'09" W	167.23'	L133	N 38°25'15" E	160.91'	L193	N 79°34'00" E	68.56'
L14	N 89°13'00" E	75.02'	L74	N 00°30'00" W	60.00'	L134	S 38°21'15" E	111.29'	L194	N 00°47'00" W	229.49'
L15	S 81°54'30" E	38.17'	L75	N 09°13'51" E	78.85'	L135	N 26°13'50" E	164.08'	L195	S 87°00'45" E	75.16'
L16	S 09°13'51" W	125.02'	L76	N 80°46'09" W	153.71'	L136	S 73°03'39" E	50.00'	L196	S 87°00'46" E	75.16'
L17	N 48°34'52" E	79.20'	L77	N 00°30'00" W	80.00'	L137	S 38°21'15" E	49.61'	L197	S 87°00'46" E	75.16'
L18	S 38°23'26" E	36.62'	L78	N 09°13'51" E	100.79'	L138	N 13°23'22" E	159.04'	L198	S 00°47'00" E	200.10'
L19	S 81°54'30" E	115.02'	L79	N 81°54'30" W	5.74'	L139	S 73°03'39" E	100.00'	L199	S 00°47'00" E	211.85'
L20	S 09°13'51" W	125.02'	L80	N 00°30'00" W	115.54'	L140	N 00°29'11" E	111.16'			
L21	N 81°54'30" W	115.02'	L81	S 14°28'29" E	86.17'	L141	N 32°40'23" E	65.71'			
L22	S 09°13'51" W	75.77'	L82	N 75°31'31" E	149.35'	L142	S 73°03'39" E	66.89'			
L23	N 84°04'55" W	163.86'	L83	N 00°30'00" W	108.54'	L143	S 89°13'01" W	122.80'			
L24	S 05°55'05" W	29.68'	L84	S 14°28'29" E	72.88'	L144	S 00°10'00" E	112.47'			
L25	S 00°30'00" W	33.79'	L85	N 76°13'03" E	167.94'	L145	N 89°50'00" E	130.38'			
L26	S 89°30'00" W	120.02'	L86	N 00°30'00" W	77.00'	L146	N 39°02'55" W	210.52'			
L27	S 35°04'03" E	75.05'	L87	S 00°29'29" W	22.50'	L147	N 89°28'02" E	185.78'			
L28	S 05°55'03" W	40.32'	L88	S 89°30'31" E	171.59'	L148	N 02°21'36" E	149.77'			
L29	S 00°30'00" W	100.02'	L89	N 00°30'00" W	60.00'	L149	S 89°50'00" W	161.21'			
L30	S 89°30'00" W	120.02'	L90	S 00°29'29" W	58.87'	L150	S 00°07'44" E	203.92'			
L31	S 00°30'00" W	100.02'	L91	S 89°30'31" E	151.17'	L151	N 89°28'02" E	53.55'			
L32	S 89°30'00" W	99.97'	L92	S 00°30'00" E	64.00'	L152	N 00°10'00" W	61.89'			
L33	N 00°30'00" E	48.87'	L93	N 71°27'27" E	144.87'	L153	S 89°50'00" W	159.83'			
L34	S 47°17'35" W	101.42'	L94	S 00°30'00" E	111.00'	L154	S 00°07'44" E	76.00'			
L35	N 89°13'00" E	85.00'	L95	N 34°50'25" E	210.31'	L155	N 00°10'00" W	76.00'			
L36	S 05°55'05" W	146.17'	L96	N 89°28'02" E	40.30'	L156	S 89°50'00" W	159.88'			
L37	N 89°13'00" E	165.00'	L97	S 00°30'00" E	159.60'	L157	S 00°07'44" E	76.00'			
L38	S 34°34'33" E	187.36'	L98	S 89°30'00" W	5.21'	L158	N 00°10'00" W	76.00'			
L39	S 75°49'38" E	166.56'	L99	N 00°30'00" W	159.49'	L159	S 89°50'00" W	159.93'			
L40	S 00°30'00" W	150.00'	L100	N 89°28'02" E	164.46'	L160	S 00°07'44" E	76.00'			
L41	S 00°30'00" W	45.01'	L101	S 89°30'00" W	75.26'	L161	N 00°10'00" W	26.11'			
L42	S 89°30'00" E	160.00'	L102	N 00°30'00" W	159.44'	L162	S 66°37'27" W	180.26'			
L43	S 00°30'00" W	100.00'	L103	N 89°28'02" E	75.26'	L163	S 00°07'44" E	124.74'			
L44	N 48°49'48" E	236.21'	L104	S 89°30'00" W	29.54'	L164	S 28°09'11" W	177.52'			
L45	S 00°30'00" W	200.00'	L105	N 27°39'37" W	187.17'	L165	N 89°13'00" E	112.67'			
L46	N 08°05'00" E	162.47'	L106	N 89°28'02" E	144.65'	L166	S 00°07'44" E	120.48'			
L47	N 89°28'02" E	195.01'	L107	N 44°02'23" W	148.82'	L167	S 17°54'46" E	156.68'			
L48	S 00°30'00" W	28.74'	L108	N 24°23'32" E	76.46'	L168	N 89°13'00" E	186.52'			
L49	S 89°30'00" W	66.05'	L109	N 85°11'15" W	149.55'	L169	S 57°48'54" E	162.72'			
L50	N 00°30'00" W	159.86'	L110	S 03°20'52" W	80.32'	L170	N 00°29'11" E	90.00'			
L51	N 89°28'02" E	100.00'	L111	S 47°26'12" W	82.10'	L171	S 89°13'00" W	126.49'			
L52	S 89°30'00" W	75.08'	L112	S 52°13'45" W	131.41'	L172	S 00°10'00" E	34.13'			
L53	N 00°30'00" W	159.82'	L113	S 03°20'52" W	60.00'	L173	S 89°13'01" W	123.45'			
L54	N 89°28'02" E	75.08'	L114	S 38°21'15" E	99.98'	L174	N 00°29'11" E	160.01'			
L55	S 89°30'00" W	75.10'	L115	S 13°40'56" W	150.78'	L175	N 00°29'11" E	220.00'			
L56	N 00°30'00" W	159.78'	L116	S 82°20'14" W	30.56'	L176	S 33°04'44" W	220.77'			
L57	N 89°28'02" E	75.10'	L117	S 38°21'15" E	119.14'	L177	S 67°12'28" W	223.00'			
L58	S 89°30'00" W	43.53'	L118	N 89°30'00" E	78.89'	L178	N 79°35'49" E	104.80'			
L59	N 00°30'00" W	142.83'	L119	S 00°29'29" W	73.50'	L179	N 00°29'11" E	30.02'			
L60	N 89°28'02" E	79.51'	L120	S 82°20'14" W	134.44'	L180	S 89°13'00" W	225.50'			

CURVE#	RADIUS	LENGTH	CHORD	CHORD BEARING	DELTA ANGLE	TANGENT
C1	700.00'	56.16'	56.15'	S 88°29'06" E	04°35'49"	28.10'
C2	700.00'	52.27'	52.26'	S 84°02'51" E	04°16'41"	26.15'
C3	380.00'	7.93'	7.93'	N 08°38'00" E	01°11'42"	3.96'
C4	380.00'	49.98'	49.94'	N 04°16'05" E	07°32'09"	25.03'
C5	65.00'	49.02'	47.86'	S 21°06'12" E	43°12'25"	25.74'
C6	65.00'	46.94'	45.93'	S 63°23'40" E	41°22'31"	24.55'
C7	65.00'	45.94'	44.99'	N 75°40'16" E	40°29'38"	23.98'
C8	65.00'	46.80'	45.79'	N 34°47'55" E	41°15'05"	24.47'
C9	65.00'	15.51'	15.47'	N 07°20'11" E	13°40'22"	7.79'
C10	65.00'	0.26'	0.26'	N 00°23'12" E	00°13'36"	0.13'
C11	65.00'	47.02'	46.00'	N 20°26'54" W	41°26'36"	24.59'
C12	65.00'	46.23'	45.26'	S 61°32'36" E	40°44'47"	24.14'
C13	65.00'	9.74'	9.73'	S 86°12'30" E	08°35'00"	4.88'
C14	60.00'	40.81'	40.03'	S 65°29'10" E	38°58'20"	21.23'
C15	60.00'	46.63'	45.46'	N 72°45'50" E	44°31'40"	24.56'
C16	60.00'	41.81'	40.97'	S 30°32'20" W	39°55'19"	21.79'
C17	60.00'	57.15'	55.02'	S 16°42'40" E	54°34'40"	30.95'
C18	320.00'	48.76'	48.72'	N 04°51'56" E	08°43'51"	24.43'
C19	800.00'	129.24'	129.10'	S 86°32'11" E	09°15'22"	64.76'
C20	800.00'	124.75'	124.62'	N 84°22'06" E	08°56'04"	62.50'
C21	320.00'	3.87'	3.87'	S 14°07'43" E	00°41'32"	1.93'
C22	320.00'	79.72'	79.52'	S 06°38'44" E	14°16'26"	40.07'
C23	65.00'	24.54'	24.40'	N 52°11'17" E	21°38'03"	12.42'
C24	65.00'	67.97'	64.91'	N 11°24'51" E	59°54'48"	37.46'
C25	65.00'	41.54'	40.84'	N 36°51'04" W	36°37'02"	21.51'
C26	65.00'	40.09'	39.46'	S 72°49'48" E	35°20'25"	20.71'
C27	65.00'	30.81'	30.52'	N 75°55'11" E	27°09'37"	15.70'
C28	65.00'	46.68'	45.68'	S 25°23'11" W	41°08'53"	24.40'
C29	65.00'	48.31'	47.21'	S 16°28'45" E	42°35'00"	25.33'
C30	65.00'	43.73'	42.91'	S 57°02'40" E	38°32'49"	22.73'
C31	65.00'	16.09'	16.05'	S 83°24'32" E	14°10'56"	8.09'
C32	380.00'	54.08'	54.03'	S 03°35'08" E	08°09'15"	27.09'
C33	380.00'	45.18'	45.15'	S 11°04'08" E	06°48'44"	22.62'
C34	700.00'	70.37'	70.34'	N 82°28'36" E	05°45'35"	35.21'
C35	700.00'	47.17'	47.16'	N 87°17'13" E	03°51'38"	23.59'
C36	285.00'	110.31'	109.62'	N 12°52'37" W	22°10'35"	55.85'
C37	285.00'	65.49'	65.34'	N 30°32'52" W	13°09'56"	32.89'
C38	285.00'	71.87'	71.68'	N 44°21'18" W	14°26'55"	36.13'
C39	285.00'	60.64'	60.52'	S 57°40'27" E	12°11'24"	30.43'
C40	285.00'	63.88'	63.74'	S 70°11'24" E	12°50'29"	32.07'
C41	285.00'	64.18'	64.05'	S 83°03'43" E	12°54'10"	32.23'
C42	285.00'	6.32'	6.32'	N 89°51'06" E	01°16'11"	3.16'
C43	70.00'	50.59'	49.50'	N 71°39'20" E	41°24'31"	26.46'
C44	70.00'	48.25'	47.30'	S 31°12'23" W	39°29'24"	25.13'
C45	70.00'	14.21'	14.18'	S 05°38'51" W	11°37'41"	7.13'
C46	70.00'	28.36'	28.16'	S 11°46'17" E	23°12'33"	14.37'
C47	70.00'	47.00'	46.12'	S 42°36'41" E	38°28'16"	24.43'
C48	70.00'	56.28'	54.78'	S 84°52'48" E	46°03'57"	29.76'
C49	70.00'	48.75'	47.77'	N 52°08'10" E	39°54'08"	25.41'
C50	70.00'	39.53'	39.00'	N 16°00'33" E	32°21'06"	20.30'
C51	225.00'	4.99'	4.99'	N 89°51'06" E	01°16'11"	2.49'
C52	225.00'	125.29'	123.68'	S 73°33'40" E	31°54'17"	64.32'
C53	225.00'	132.12'	130.23'	N 40°47'13" W	33°38'37"	68.03'
C54	225.00'	86.03'	85.51'	N 13°00'40" W	21°54'30"	43.55'
C55	690.00'	56.85'	56.83'	N 84°10'50" W	04°43'15"	28.44'



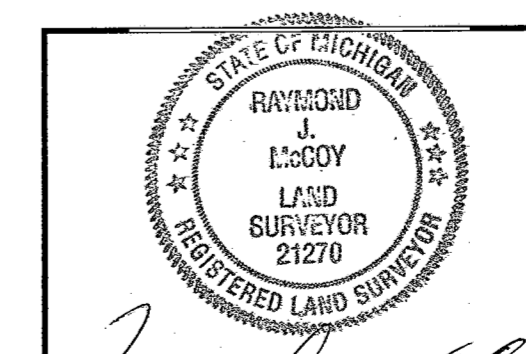
# LIBERTY WOODS

WASHINGTON TOWNSHIP, MACOMB COUNTY, MICHIGAN



09-Coord.plt - 1/6/05, Time: 09:51 AM -

©2005

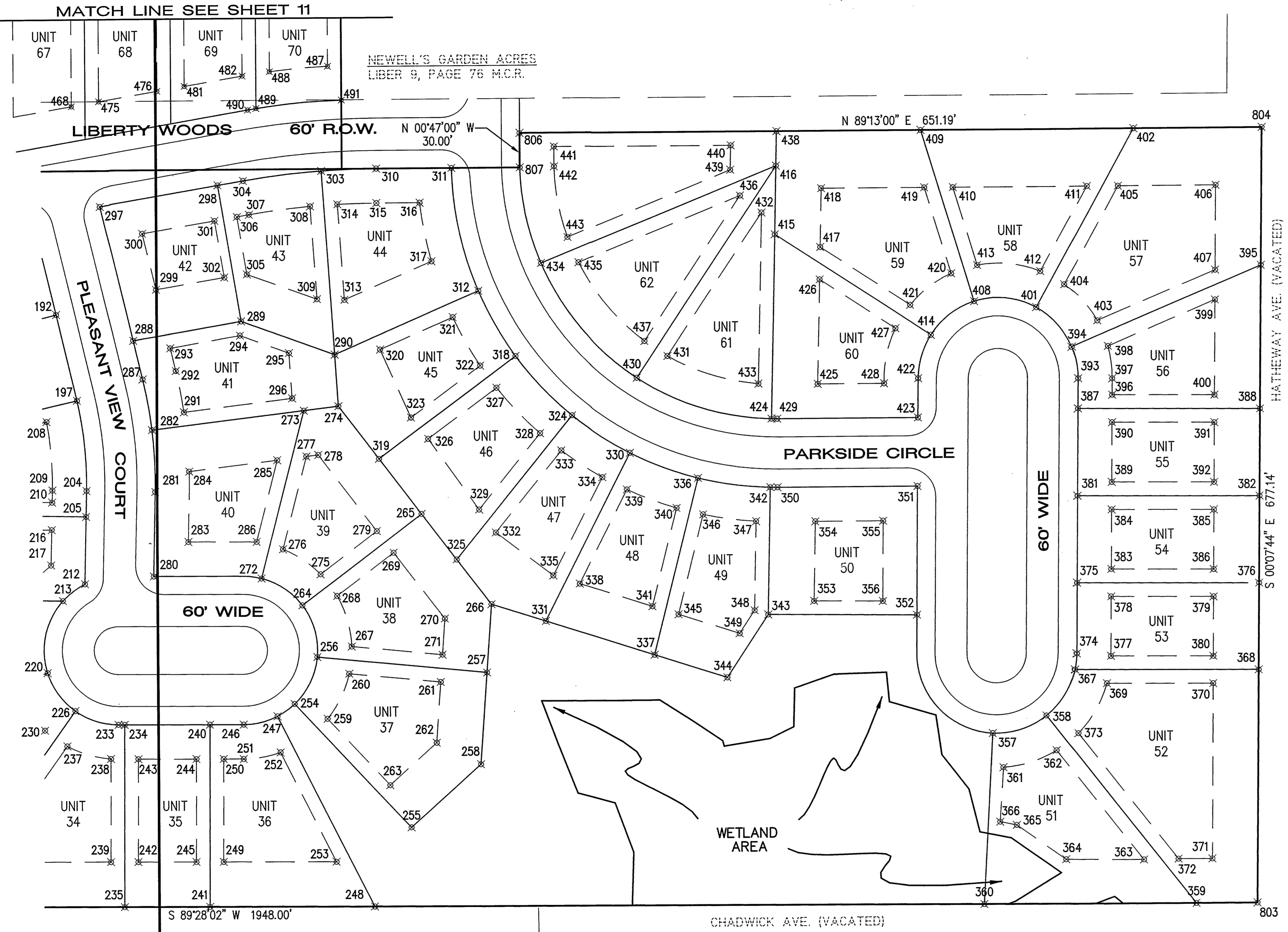
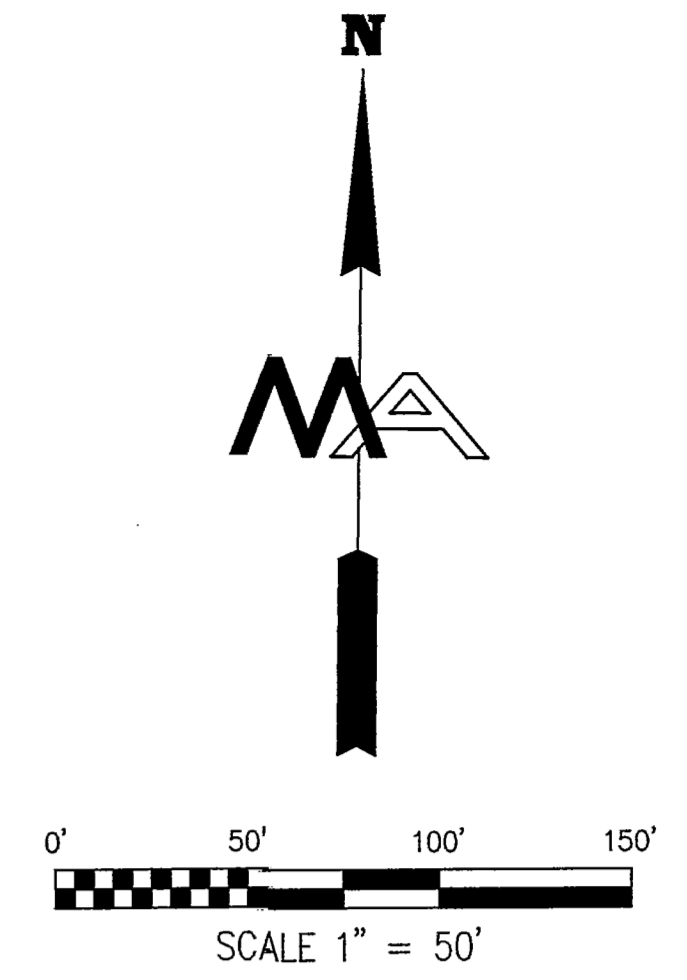


<b>MICKALICH and ASSOCIATES, INC.</b>	
CIVIL ENGINEERING SURVEYING PLANNING	
2359 AVON INDUSTRIAL DR., ROCHESTER HILLS, MI. 48309	
INTERNET: WWW.MICKALICH.COM PHONE: (248) 852-1900 FAX: (248) 852-1070	
PROJECT: <b>LIBERTY WOODS</b>  TITLE: <b>COORDINATE PLAN (WEST HALF)</b>  CLIENT: <b>TOWN SQUARE ASSOCIATES, LLC</b>	DATE: <b>JULY 17, 1995</b>  DRAWN BY: <b>JWJ</b> CHECKED BY: <b>RH</b> APPROVED BY: <b>A.P.M.</b>  SCALE: <b>Horizontal 1" = 50'</b> Vertical:
SHEET No. <b>9452</b> 9	

DATE AMENDED: JANUARY 3, 2005

# LIBERTY WOODS

WASHINGTON TOWNSHIP, MACOMB COUNTY, MICHIGAN



MATCH LINE SEE SHEET 11

SEE SHEET 9  
MATCH LINE

NEWELL'S GARDEN ACRES  
LIBER 9, PAGE 76 M.C.R.

WOODLAND ACRES  
LIBER 34, PAGE 39 M.C.R.

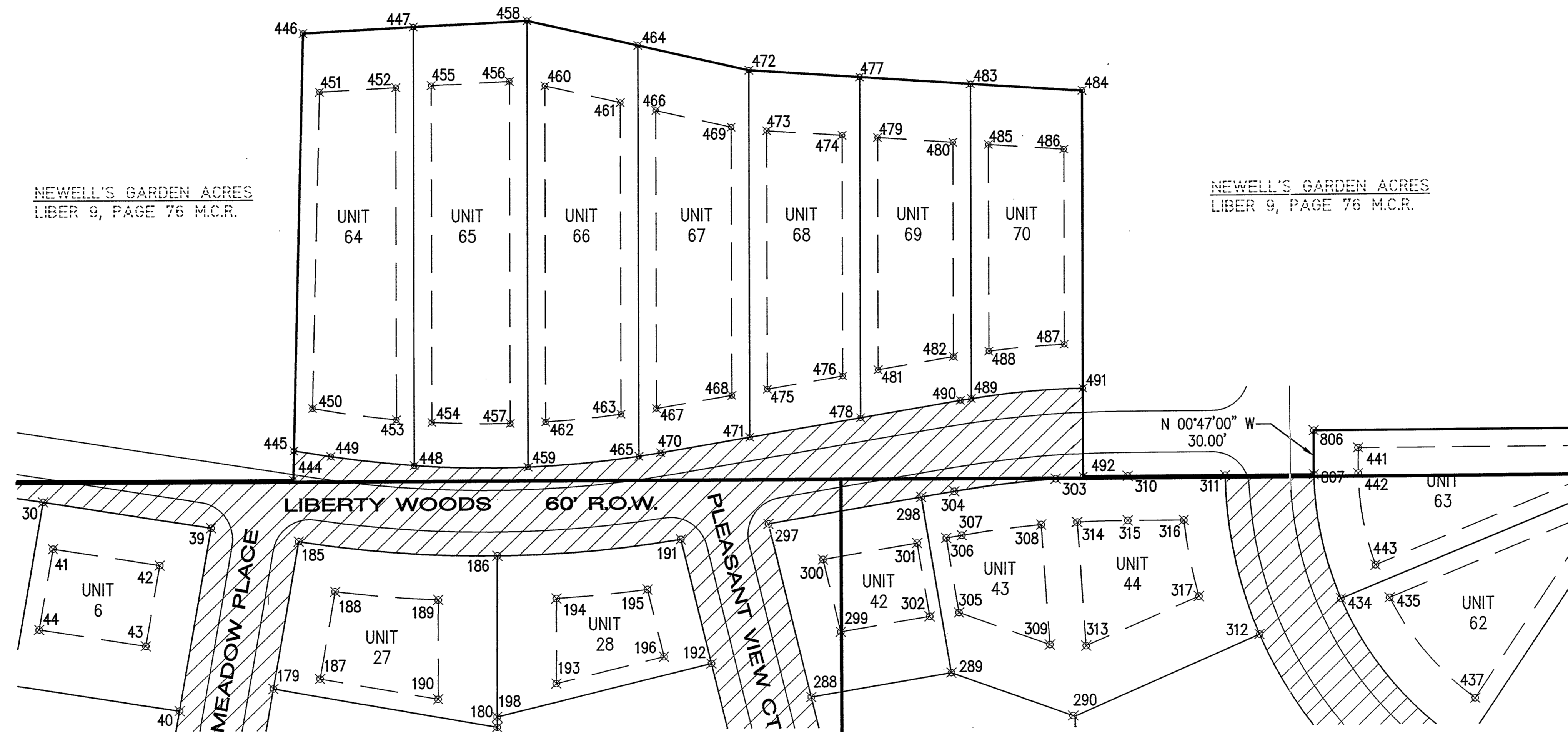
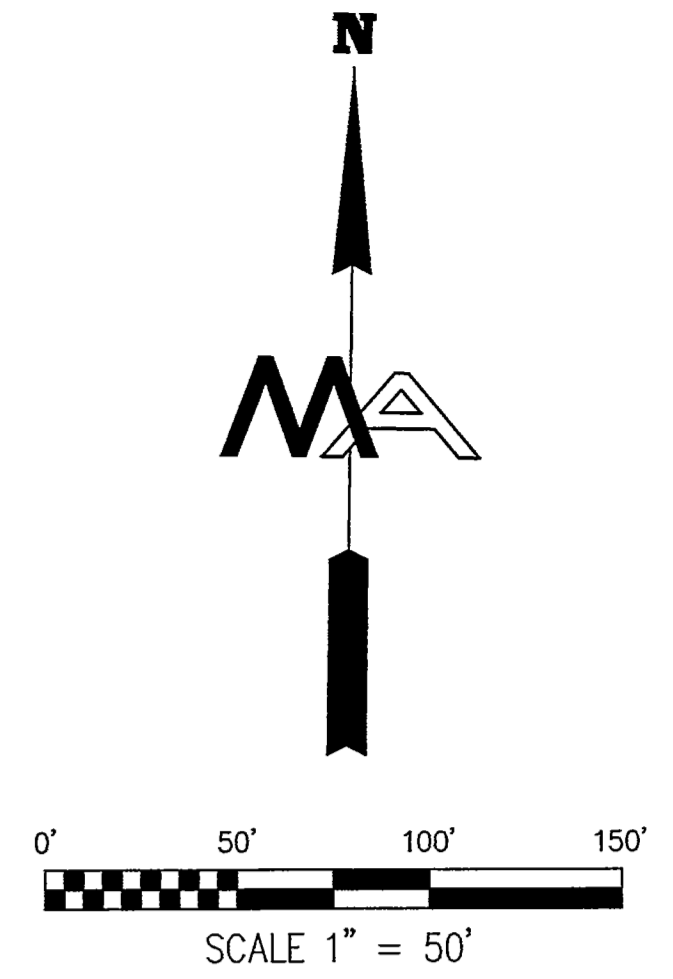
UNPLATTED

©2005

	<b>MICKALICH and ASSOCIATES, INC.</b> CIVIL ENGINEERING SURVEYING PLANNING 2359 AVON INDUSTRIAL DR., ROCHESTER HILLS, MI. 48309 INTERNET: WWW.MICKALICH.COM PHONE: (248) 852-1900 FAX: (248) 852-1070	
	PROJECT: <b>LIBERTY WOODS</b> TITLE: <b>COORDINATE PLAN (EAST HALF)</b> CLIENT: <b>TOWN SQUARE ASSOCIATES, LLC</b>	DRAWN BY: <b>JWJ</b> CHECKED BY: <b>RH</b> APPROVED BY: <b>A.P.M.</b> SCALE: Horizontal 1" = 50' Vertical:

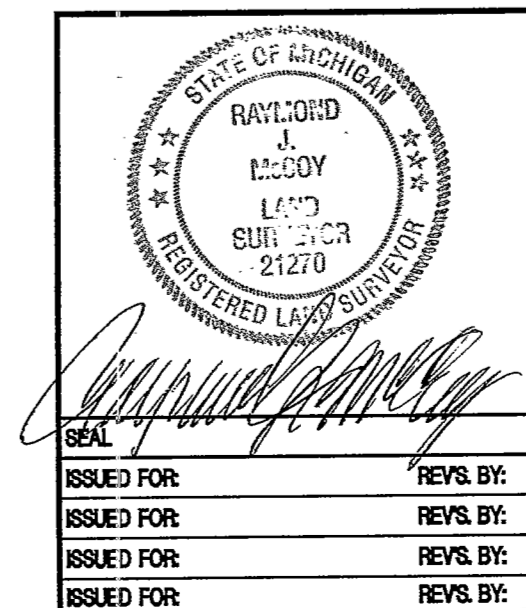
# LIBERTY WOODS

WASHINGTON TOWNSHIP, MACOMB COUNTY, MICHIGAN



MATCH LINE SEE SHEET 9  
MATCH LINE SEE SHEET 10

©2005



<b>MICKALICH and ASSOCIATES, INC.</b> CIVIL ENGINEERING SURVEYING PLANNING 2359 AVON INDUSTRIAL DR, ROCHESTER HILLS, MI. 48309 INTERNET: WWW.MICKALICH.COM PHONE: (248) 852-1900 FAX: (248) 852-1070		DRAWN BY: JWJ	DATE: JULY 17, 1995
		CHECKED BY: RH	PROJECT No. 9452
PROJECT: LIBERTY WOODS TITLE: COORDINATE PLAN (NORTH) CLIENT: TOWN SQUARE ASSOCIATES, LLC		APPROVED BY: A.P.M.	SHEET No. 11
SCALE: Horizontal 1" = 50' Vertical _____			

DATE AMENDED: JANUARY 3, 2005

# LIBERTY WOODS

## WASHINGTON TOWNSHIP, MACOMB COUNTY, MICHIGAN

PtNo.	North(x)	East(y)	PtNo.	North(x)	East(y)	PtNo.	North(x)	East(y)	PtNo.	North(x)	East(y)	PtNo.	North(x)	East(y)	PtNo.	North(x)	East(y)	PtNo.	North(x)	East(y)	PtNo.	North(x)	East(y)	PtNo.	North(x)	East(y)			
1	3680.871	5048.475	46	3450.269	5559.719	91	3370.882	5045.770	136	3206.449	5530.212	181	3477.573	5655.254	226	3222.114	5952.669	271	3273.763	6274.440	316	3667.308	6250.890	361	3177.861	6767.302	406	3656.606	6948.801
2	3652.123	5158.024	47	3467.164	5396.731	92	3451.300	5096.296	137	3189.840	5566.633	182	3531.711	5664.052	227	3049.501	5832.520	272	3339.578	6115.190	317	3616.226	6261.670	362	3192.972	6813.764	407	3612.663	6949.458
3	3492.129	5156.627	48	3531.241	5499.425	93	3482.143	5139.948	138	3047.040	5567.879	183	3518.047	5748.130	228	3210.753	5830.815	273	3486.083	6150.855	318	3534.550	6336.212	363	3097.849	6890.927	408	3584.238	6738.313
4	3520.877	5047.079	49	3525.269	5541.431	94	3384.969	5206.923	139	3086.177	5499.535	184	3462.399	5748.616	229	3234.722	5903.982	274	3490.158	6181.141	319	3444.497	6217.273	364	3097.652	6822.976	409	3703.068	6689.682
5	3651.206	5073.217	50	3465.240	5531.675	95	3348.894	5181.852	140	3176.173	5498.750	185	3647.851	5652.533	230	3204.971	5926.116	275	3343.630	6166.958	320	3539.546	6217.183	365	3127.600	6779.340	410	3653.455	6718.331
6	3652.204	5146.201	51	3475.171	5435.868	96	3340.381	5095.328	141	3176.355	5519.605	186	3639.244	5787.074	231	3089.196	5845.529	276	3365.149	6133.765	321	3567.766	6280.670	366	3130.321	6764.798	411	3655.057	6835.521
7	3562.225	5145.416	52	3400.463	5556.002	97	3314.752	5205.286	142	3161.231	5554.882	187	3555.401	5667.902	232	3089.077	5831.877	277	3446.074	6153.466	322	3526.146	6305.233	367	3263.722	6829.145	412	3610.825	6796.104
8	3561.227	5072.432	53	3366.678	5555.707	98	3269.490	5204.892	143	3086.665	5555.533	188	3614.344	5677.481	233	3180.213	5989.928	278	3447.479	6163.905	323	3480.566	6245.033	368	3264.191	6890.357	413	3615.787	6740.726
9	3653.149	5233.035	54	3365.630	5435.694	99	3270.886	5044.897	144	3203.312	5610.056	189	3609.411	5747.333	234	3180.259	5995.142	279	3381.636	6216.006	324	3483.297	6386.324	369	3251.804	6857.148	414	3554.917	6700.599
10	3493.155	5231.639	55	3427.058	5392.574	100	3315.682	5095.113	145	3048.618	5737.576	190	3542.396	5747.918	235	3020.779	5996.534	280	3340.732	6020.364	325	3357.227	6286.328	370	3252.075	6950.507	415	3641.593	6562.880
11	3174.574	5260.310	56	3451.104	5435.280	101	3325.624	5175.975	146	3086.875	5579.532	191	3651.474	5911.095	236	3089.453	5874.950	281	3414.227	6020.994	326	3461.999	6260.269	371	3098.843	6950.953	416	3701.583	6563.389
12	3013.721	5237.464	57	3441.452	5528.389	102	3281.751	5174.997	147	3159.882	5578.895	192	3568.043	5932.633	237	3191.260	5945.814	282	3468.157	6017.615	327	3507.011	6319.720	372	3098.584	6921.234	417	3630.655	6602.789
13	3563.250	5220.409	58	3400.725	5526.003	103	3252.198	5094.559	148	3173.150	5619.368	193	3553.593	5827.823	238	3180.635	5984.084	283	3370.997	6050.624	328	3467.429	6358.421	373	3208.092	6832.403	418	3651.875	6602.784
14	3562.553	5169.420	59	3378.417	5525.809	104	3226.390	5220.962	149	3087.836	5689.695	194	3611.005	5827.322	239	3090.412	5984.871	284	3432.253	6050.742	329	3400.884	6305.639	374	3277.835	6830.540	419	3653.111	6693.219
15	3654.174	5308.047	60	3377.982	5475.895	105	3269.747	5204.894	150	3238.595	5630.872	195	3617.518	5888.877	240	3180.916	6070.399	285	3442.638	6127.929	330	3450.934	6437.466	375	3339.726	6830.360	420	3608.405	6717.890
16	3494.180	5306.651	61	3437.804	5433.902	106	3070.894	5043.152	151	3208.723	5790.831	196	3572.364	5900.534	241	3021.479	6071.790	286	3371.520	6110.615	331	3303.753	6364.946	376	3340.191	6990.186	421	3580.667	6682.213
17	3653.557	5245.198	62	3266.666	5554.835	107	3228.199	5094.349	152	3049.127	5792.224	197	3493.723	5951.794	242	3090.622	6008.870	287	3512.470	6008.946	332	3380.935	6320.449	377	3275.814	6860.546	422	3517.427	6689.843
18	3654.255	5296.187	63	3265.619	5434.821	108	3257.745	5175.582	153	3188.416	5637.887	198	3530.711	5788.021	243	3180.618	6008.085	288	3545.839	6000.331	333	3452.515	6377.225	378	3327.813	6860.395	423	3483.293	6689.942
19	3563.578	5244.413	64	3353.978	5475.593	109	3216.176	5191.052	154	3221.439	5657.369	199	3453.714	5788.693	244	3181.063	6059.083	289	3563.220	6095.002	334	3429.532	6413.543	379	3328.075	6950.286	424	3481.593	6561.521
20	3654.276	5295.402	65	3354.414	5525.599	110	3100.770	5093.237	155	3203.978	5750.871	200	3528.862	5828.039	245	3091.067	6059.868	290	3504.429	6177.927	335	3343.653	6371.228	380	3276.075	6950.438	425	3512.091	6601.782
21	3684.765	5333.348	66	3296.408	5525.093	111	3204.826	5260.751	156	3088.185	5751.882	201	3549.125	5906.533	246	3211.425	6100.382	291	3484.026	6045.572	336	3429.332	6497.435	381	3415.726	6830.139	426	3602.448	6602.549
22	3653.030	5389.033	67	3295.971	5475.087	112	3043.972	5237.906	157	3088.106	5720.577	202	3498.201	5919.679	247	3218.851	6129.990	292	3519.968	6037.993	337	3424.617	6460.607	382	3416.191	6990.015	427	3560.355	6669.429
23	3495.137	5376.607	68	3264.747	5334.855	113	3052.380	5092.815	158	3291.289	5615.052	203	3475.835	5828.502	248	3053.075	6216.877	293	3539.622	6032.920	338	3336.568	6394.492	383	3351.813	6860.325	428	3512.886	6659.955
24	3654.583	5320.191	69	3313.618	5335.281	114	3198.109	5206.851	159	3310.245	5615.217	204	3414.742	5960.996	249	3091.276	6083.867	294	3550.851	6094.083	339	3418.924	6435.071	384	3403.813	6860.174	429	3481.606	6566.507
25	3654.768	5333.758	70	3358.271	5318.048	115	3177.564	5244.759	160	3308.720	5789.959	205	3392.245	5960.803	250	3181.273	6083.082	295	3536.092	6137.195	340	3403.148	6478.867	385	3404.075	6950.065	430	3516.632	6442.900
26	3654.101	5374.177	71	3385.814	5406.864	116	3083.837	5231.447	161	3245.032	5661.775	206	3393.716	5789.217	251	3181.426	6100.644	296	3496.792	6140.454	341	3317.108	6458.386	386	3352.075	6950.216	431	3535.632	6469.623
27	3565.266	5367.856	72	3361.886	5423.661	117	3173.931	5270.017	162	3297.960	5647.801	207	3451.176	5828.717	252	3187.383	6132.935	297	3662.324	5970.261	342	3421.595	6561.012	387	3491.725	6829.918	432	3660.628	6551.641
28	3564.604	5319.406	73	3295.518	5423.081	118	3174.507	5336.065	163	3297.067	5750.059	208	3474.862	5925.276	253	3092.140	6182.854	298	3681.247	6073.334	343	3310.441	6560.068	388	3492.191	6989.845	433	3512.064	6549.780
29	3677.862	5441.449	74	3295.012	5365.120	119	3014.650	5337.460	164	3228.433	5750.658	209	3414.999	5930.997	254	3229.697	6145.000	299	3590.099	6019.889	344	3255.128	6524.595	389	3427.813	6860.104	434	3615.195	6357.828
30	3672.489	5479.242	75	3313.356	5365.280	120	3084.049	5255.718	165	3385.230	5615.872	210	3404.502	5930.907	255	3122.714	6248.455	300	3638.634	6007.360	345	3310.102	6481.389	390	3479.813	6859.953	435	3616.009	6390.744
31	3549.083	5459.186	76	3343.235	5360.733	121	3174.164	5268.517	166	3383.717	5789.304	211	3405.375	5829.117	256	3270.969	6164.586	301	3650.296	6070.882	346	3397.591	6502.215	391	3480.074	6949.844	436	3675.364	6531.997
32	3496.685	5399.791	77	3378.838	5276.986	122	3174.655	5324.756	167	3321.982	5645.321	212	3333.380	5960.298	257	3258.423	6313.611	302	3601.118	6079.911	347	3391.927	6548.760	392	3428.074	6949.995	437	3548.452	6449.331
33	3652.552	5398.128	78	3524.226	5292.056	123	3084.658	5325.542	168	3372.969	5645.766	213	3318.423	5941.024	258	3178.243	6308.921	303	3664.303	6164.942	348	3314.005	6548.098	393	3517.834	6829.842	438	3701.338	6563.203
34	3648.160	5437.226	79	3484.331	5299.985	124	3175.162	5411.142	169	3372.065	5749.404	214	3319.719	5789.880	259	3217.020	6173.952	304	3685.345	6095.651	349	3293.742	6535.103	394	3545.404	6824.097	439	3667.514	6522.914
35	3644.561	5462.545	80	3485.515	5386.569	125	3015.349	5412.537	170	3321.070	5749.849	215	3381.372	5829.326	260	3256.559	6192.715	305	3603.878	6099.738	350	3421.612	6567.327	395	3616.926	6989.564	440	3688.789	6523.095
36	3598.831	5455.113	81	3432.802																									

# REPLAT NO. 3

MACOMB COUNTY CONDOMINIUM SUBDIVISION PLAN NO. 523  
EXHIBIT "B" TO THE MASTER DEED OF

# LIBERTY WOODS

WASHINGTON TOWNSHIP, MACOMB COUNTY, MICHIGAN

## PROPRIETOR

LIBERTY WOODS CONDOMINIUM ASSOCIATION  
58255 PLEASANT VIEW CT.  
WASHINGTON, MICHIGAN 48094

## ENGINEERS & SURVEYORS

GIFFELS WEBSTER  
28 W. ADAMS, SUITE 1200  
DETROIT, MICHIGAN 48226

## PROPERTY DESCRIPTION

PART OF THE NORTHWEST QUARTER OF SECTION 35, TOWN 4 NORTH, RANGE 12 EAST, WASHINGTON TOWNSHIP, MACOMB COUNTY MICHIGAN DESCRIBED AS:

ALL OF LOTS 13 THROUGH 18 INCLUSIVE, AND THE VACATED PORTIONS OF CHADWICK AVENUE, GERNT AVENUE, CLEBURNE AVENUE, PURSELL AVENUE AND HATHEWAY AVENUE OF "NEWELL'S GARDEN ACRES" SUBDIVISION AS RECORDED IN LIBER 9, PAGE 76 OF PLATS, MACOMB COUNTY RECORDS AND PART OF LOT 19 OF AMENDED PLAT OF LOTS 1, 2, 3, 4, 5, 8, 9, AND 10 AND THE VACATED PARTS OF NEWELL AVENUE, GERNT AVENUE, AND CLEBURNE AVENUE OF NEWELL'S GARDEN ACRES SUBDIVISION AS RECORDED IN LIBER 156, PAGES 47 THROUGH 49 OF PLATS, MACOMB COUNTY RECORDS, BEING MORE PARTICULARLY DESCRIBED AS: BEGINNING AT THE NORTHWEST CORNER OF LOT 13 OF SAID NEWELL'S GARDEN ACRES SUBDIVISION; THENCE NORTH 89 DEGREES 13 MINUTES 00 SECONDS EAST, 600.03 FEET ALONG THE SOUTH RIGHT OF WAY LINE OF SAID PURSELL AVENUE (60 FEET WIDE); THENCE NORTH 00 DEGREES 35 MINUTES 32 SECONDS EAST, 300.99 FEET; THENCE NORTH 86 DEGREES 15 MINUTES 55 SECONDS EAST, 151.91 FEET; THENCE SOUTH 78 DEGREES 01 MINUTES 00 SECONDS EAST, 153.80 FEET; THENCE SOUTH 87 DEGREES 00 MINUTES 46 SECONDS EAST, 225.48 FEET; THENCE SOUTH 89 DEGREES 24 MINUTES 28 SECONDS EAST, 132.30 FEET TO A POINT ON THE EAST LINE OF LOT 19; THENCE SOUTH 00 DEGREES 35 MINUTES 32 SECONDS WEST, 256.81 FEET ALONG SAID EAST LINE TO THE SOUTHEAST CORNER OF SAID LOT 19; THENCE NORTH 89 DEGREES 13 MINUTES 00 SECONDS EAST, 30.17 FEET; THENCE NORTH 00 DEGREES 47 MINUTES 00 SECONDS WEST, 30.00 FEET; THENCE NORTH 89 DEGREES 13 MINUTES 00 SECONDS EAST, 651.19 FEET; THENCE SOUTH 00 DEGREES 07 MINUTES 44 SECONDS EAST, 677.14 FEET; THENCE SOUTH 89 DEGREES 28 MINUTES 02 SECONDS WEST, 1948.00 FEET IN PART ALONG THE NORTH LINE OF "WOODLAND ACRES SUBDIVISION" AS RECORDED IN LIBER 34, PAGE 39 OF PLATS, MACOMB COUNTY RECORDS TO A POINT ON THE EAST RIGHT OF WAY LINE OF JEWELL ROAD (1/2 WIDTH = 60 FEET); THENCE NORTH 00 DEGREES 30 MINUTES 00 SECONDS EAST, 638.74 FEET ALONG SAID EAST LINE TO THE POINT OF BEGINNING AND CONTAINING 33.38 ACRES.

ATTENTION: MACOMB COUNTY REGISTER OF DEEDS

THE CONDOMINIUM SUBDIVISION PLAN NUMBER MUST BE ASSIGNED IN CONSECUTIVE SEQUENCE. WHEN A NUMBER HAS BEEN ASSIGNED TO THIS PROJECT, IT MUST BE PROPERLY SHOWN IN THE TITLE (SHEET 1) AND THE SURVEYOR'S CERTIFICATE (SHEET 2).

### SHEET INDEX

* 1	COVER SHEET
* 2	SURVEY PLAN
3	UTILITY PLAN (WEST)
* 4	UTILITY PLAN (EAST)
5	SITE PLAN (WEST)
* 6	SITE PLAN (EAST)
* 7	SITE PLAN (NORTH)
* 8	UNIT DATA
9	COORDINATE PLAN (WEST)
10	COORDINATE PLAN (EAST)
11	COORDINATE PLAN (NORTH)
12	COORDINATE LIST

\* THE ASTERISK AS SHOWN IN THE SHEET INDEX INDICATES NEW OR AMENDED DRAWINGS. THESE DRAWINGS ARE TO REPLACE OR BE SUPPLEMENTAL TO THOSE PREVIOUSLY RECORDED.

**NOTE:**  
THIS CONDOMINIUM SUBDIVISION PLAN IS NOT REQUIRED TO CONTAIN DETAILED PROJECT DESIGN PLANS PREPARED BY THE APPROPRIATE LICENSED DESIGN PROFESSIONAL. SUCH PROJECT DESIGN PLANS ARE FILED, AS PART OF THE CONSTRUCTION PERMIT APPLICATION, WITH THE ENFORCING AGENCY FOR THE STATE CONSTRUCTION CODE IN THE RELEVANT GOVERNMENTAL SUBDIVISION. THE ENFORCING AGENCY MAY BE A LOCAL BUILDING DEPARTMENT OR THE STATE DEPARTMENT OF LICENSING AND REGULATORY AFFAIRS.

**NOTE:**  
REPLAT NO. 3 AS TO ADDING 0.76 ACRES ONLY.

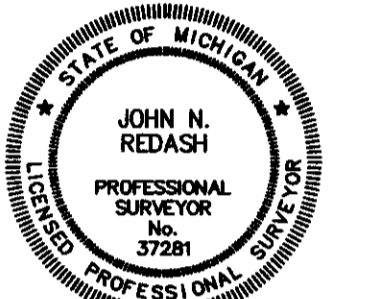
**giffels  
webster**

ENGINEERS  
SURVEYORS  
PLANNERS  
LANDSCAPE ARCHITECTS

28 W. ADAMS STREET  
SUITE 1200  
DETROIT, MI 48226  
P (313) 962-4442  
www.giffelswebster.com

EXECUTIVE: M.K.  
MANAGER: M.K.  
DESIGNER: L.D.A.  
Q. CTRL: M.P.M.  
SECTION:

SEAL:



*John H. Redash*



KNOW WHAT'S BELOW.  
CALL BEFORE YOU DIG.

DATE:	ISSUE:
09/21/20	ADD SAN. EASE.

COVER SHEET

LIBERTY WOODS

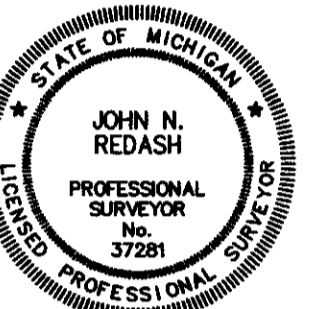
WASHINGTON TOWNSHIP  
MACOMB COUNTY  
MICHIGAN

DATE: 12.20.19  
SCALE: N/A  
SHEET: 1  
PROJECT: 17850.27

DATE PROPOSED 12/20/2019



SEAL:



KNOW WHAT'S BELOW.  
CALL BEFORE YOU DIG.

DATE: 09/21/20 ISSUE: ADD SAN. EASE.

UTILITY PLAN

LIBERTY WOODS

WASHINGTON TOWNSHIP  
MACOMB COUNTY  
MICHIGAN

DATE: 12.20.2019  
SCALE: 1" = 50'  
SHEET: 4  
PROJECT: 17850.27

# LIBERTY WOODS

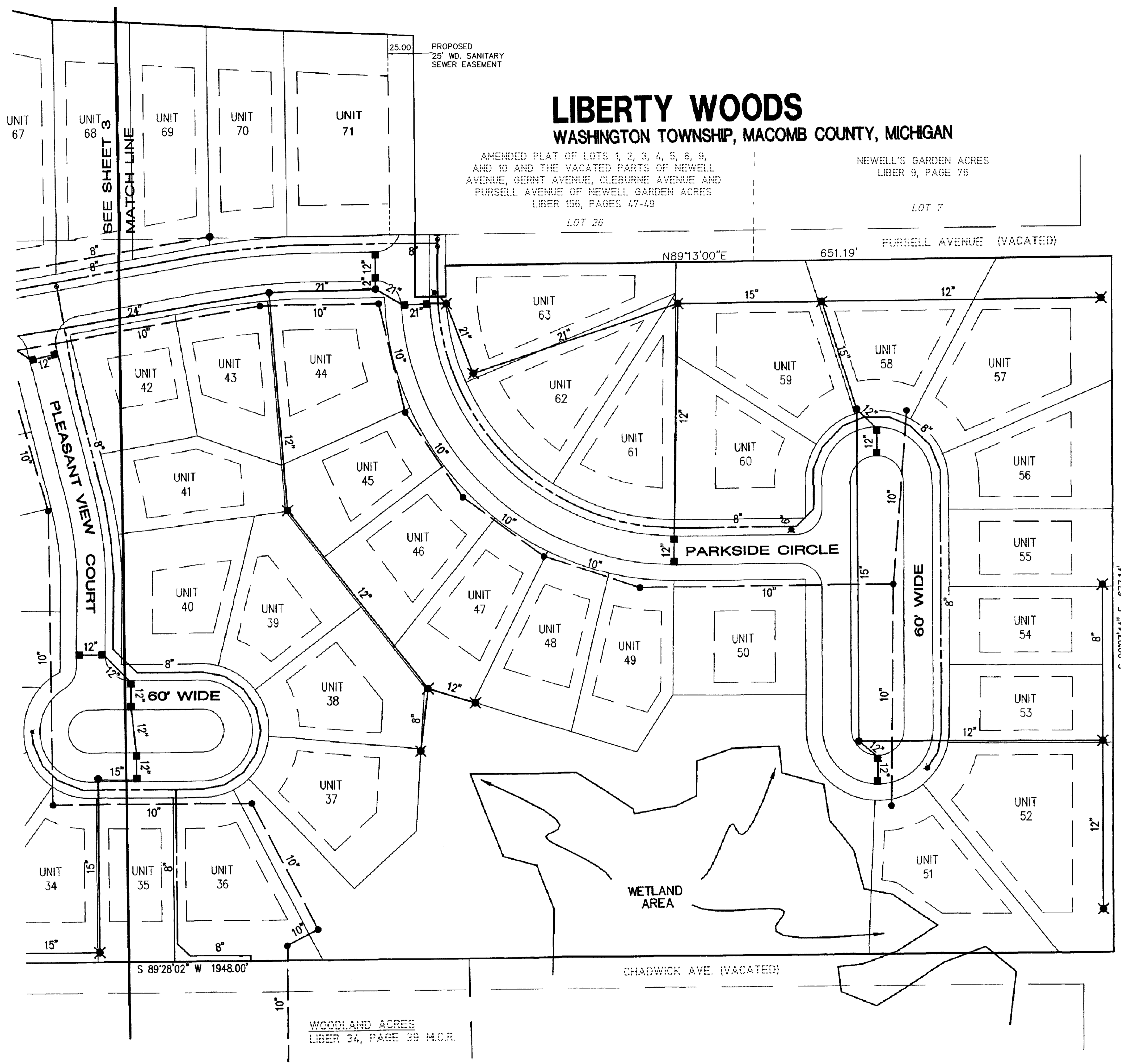
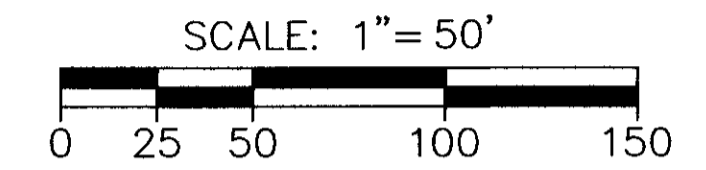
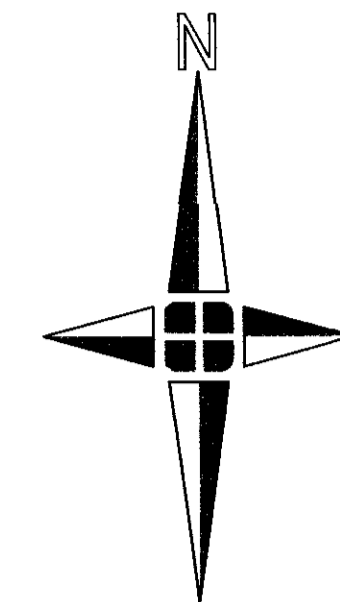
WASHINGTON TOWNSHIP, MACOMB COUNTY, MICHIGAN

AMENDED PLAT OF LOTS 1, 2, 3, 4, 5, 8, 9,  
AND 10 AND THE VACATED PARTS OF NEWELL  
AVENUE, GERNT AVENUE, CLEBURNE AVENUE AND  
PURSELL AVENUE OF NEWELL GARDEN ACRES  
LIBER 156, PAGES 47-49

NEWELL'S GARDEN ACRES  
LIBER 9, PAGE 76

LOT 26

LOT 7



### LEGEND

- EX. STORM SEWER
- PROPOSED STORM SEWER
- EX. SANITARY SEWER
- PROPOSED SANITARY SEWER
- EX. WATER MAIN
- PROPOSED WATER MAIN
- EX. MANHOLE
- PR. MANHOLE
- EX. CATCH BASIN
- PR. CATCH BASIN
- EX. HYDRANT
- PR. HYDRANT
- EX. GATE VALVE
- PR. GATE VALVE

### NOTES

1. ALL UNITS TO BE SERVICE BY SANITARY SEWER, WATER MAIN AND STORM SEWER.
2. TRUNK LINES FOR ELECTRIC, GAS AND TELEPHONE MUST BE BUILT; INDIVIDUAL SERVICES NEED NOT BE BUILT.
3. EXISTING UTILITY INFORMATION OBTAINED FROM WASHINGTON TOWNSHIP RECORDS, DETROIT EDISON CO. MICHIGAN BELL TELEPHONE, CONSUMERS POWER GAS COMPANY AND FIELD INSPECTION.
4. SANITARY SEWER, STORM SEWER AND WATER MAIN AS SHOWN "MUST BE BUILT".
5. SANITARY SEWER SERVICE LEADS ARE 6". WATER SERVICE LEADS WILL BE SHOWN ON AS-BUILT DRAWINGS.
6. GAS, TELEPHONE, ELECTRIC AND CABLE TV SERVICE WILL BE SHOWN ON AS-BUILT DRAWINGS.

NOTE:  
REPLAT NO. 3 AS TO ADDING 0.76 ACRES ONLY.





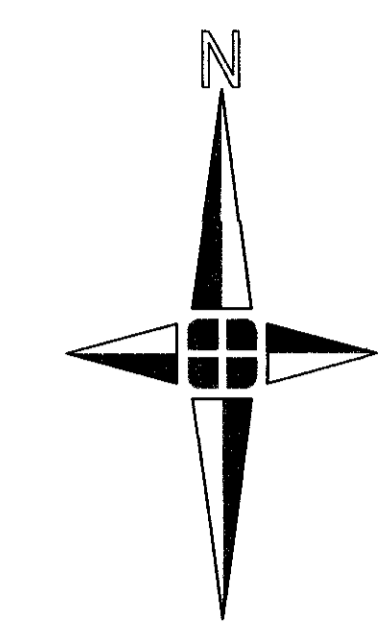
# LIBERTY WOODS

WASHINGTON TOWNSHIP, MACOMB COUNTY, MICHIGAN

**giffels webster**

ENGINEERS  
SURVEYORS  
PLANNERS  
LANDSCAPE ARCHITECTS

28 W. ADAMS STREET  
SUITE 1200  
DETROIT, MI 48226  
P (313) 962-4442  
www.giffelswebster.com



SCALE: 1" = 50'  
0 25 50 100 150

EXECUTIVE: M.K.  
MANAGER: M.K.  
DESIGNER: L.D.A.  
Q. CTRL: M.P.M.  
SECTION: 35  
T-04-N., R-12-E.

SEAL:

John N. Redash  
Professional Surveyor  
No. 37281

**811**  
KNOW WHAT'S BELOW.  
CALL BEFORE YOU DIG.

DATE:	ISSUE:
09/21/20	ADD SAN. EASE.

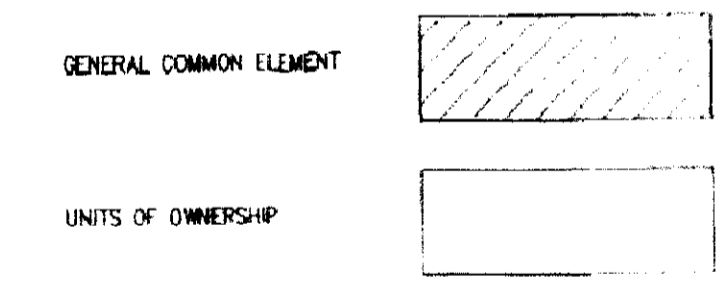
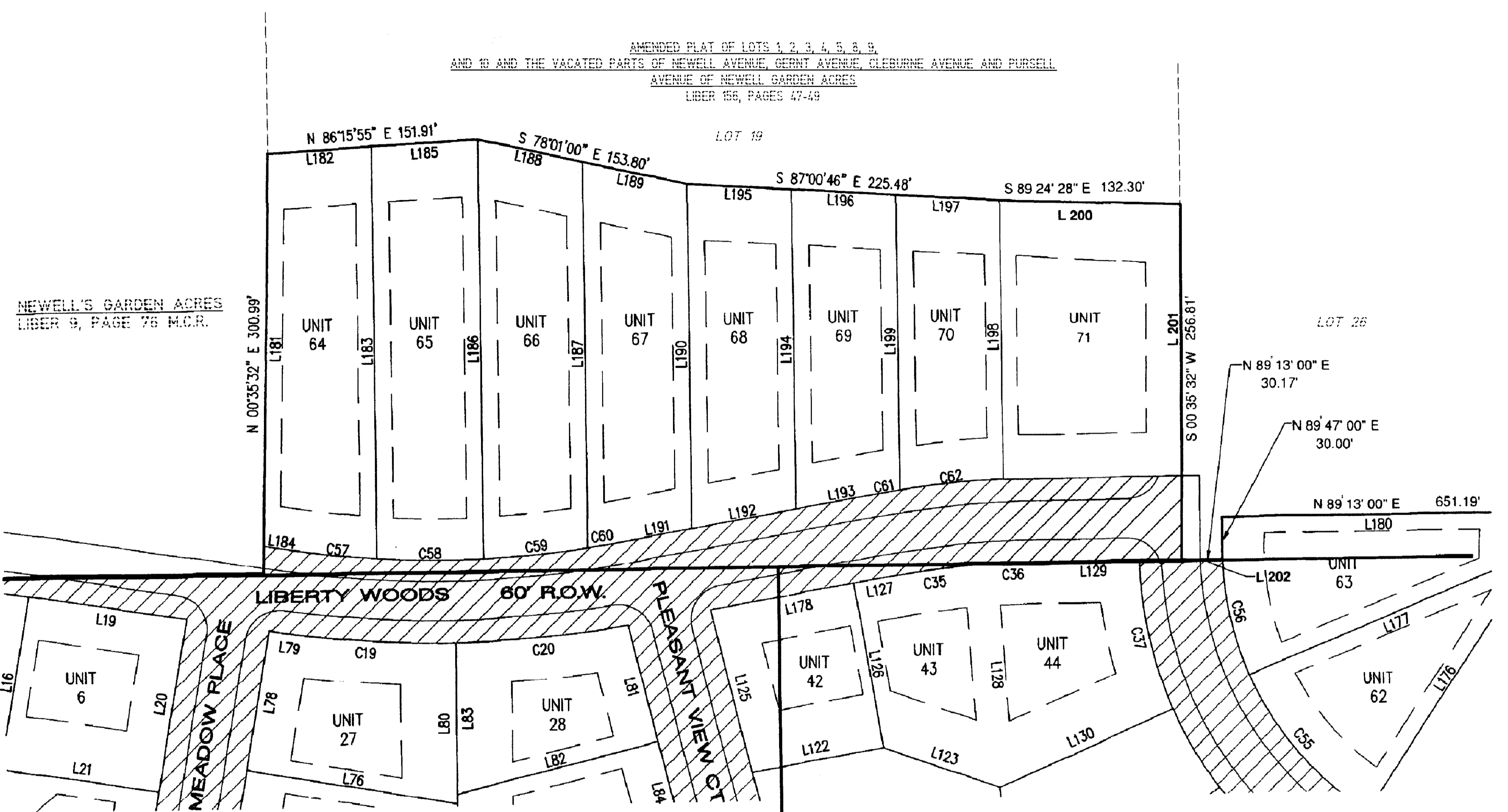
SITE PLAN (NORTH)

LIBERTY WOODS

WASHINGTON TOWNSHIP  
MACOMB COUNTY  
MICHIGAN

DATE: 12.20.2019  
SCALE: 1" = 50'  
SHEET: 7  
PROJECT: 17850.27

AMENDED PLAT OF LOTS 1, 2, 3, 4, 5, 6, 9,  
AND 10 AND THE VACATED PARTS OF NEWELL AVENUE, GERINT AVENUE, GLEBURNE AVENUE AND PURSELL  
AVENUE OF NEWELL GARDEN ACRES  
LIBER 156, PAGES 47-49



MATCH LINE SEE SHEET 5  
MATCH LINE SEE SHEET 6

NOTE:  
REPLAT NO. 3 AS TO ADDING 0.76 ACRES ONLY.

DATE PROPOSED 12/20/2019

N:\1717850\17850.27 - Liberty Woods\Drawings\Condos\Liberty Wood Replat No 3\07 Site Plan North Sheet.dwg

# LIBERTY WOODS

## WASHINGTON TOWNSHIP, MACOMB COUNTY, MICHIGAN

LINE#	BEARING	DISTANCE	LINE#	BEARING	DISTANCE	LINE#	BEARING	DISTANCE	LINE#	BEARING	DISTANCE
L1	N 89°13'00" E	110.00	L61	N 39°30'00" W	200.48	L121	S 14°28'29" E	34.48	L181	N 00°35'32" E	281.08
L2	N 00°30'00" E	160.00	L62	N 89°28'02" E	170.00	L122	N 79°35'49" E	96.25	L182	N 86°15'55" E	74.81
L3	N 89°13'00" E	110.00	L63	N 79°25'20" W	182.72	L123	N 71°05'06" W	88.12	L183	S 00°47'00" E	295.33
L4	S 00°30'00" W	160.00	L64	S 00°30'00" E	159.80	L124	N 03°33'50" W	44.61	L184	N 81°49'11" W	25.31
L5	N 89°13'00" E	80.00	L65	N 89°28'02" E	54.85	L125	S 14°28'29" E	120.30	L185	N 86°15'55" E	77.10
L6	S 89°13'00" W	75.02	L66	N 00°30'00" E	18.96	L126	N 10°24'11" W	120.00	L186	S 00°47'00" E	300.70
L7	N 00°30'00" E	160.00	L67	N 89°30'00" W	174.75	L127	S 79°35'49" W	22.69	L187	S 00°47'00" E	276.77
L8	N 89°13'00" E	75.02	L68	N 00°30'00" W	100.00	L128	N 04°38'36" W	160.40	L188	S 78°01'00" E	76.90
L9	S 89°13'00" W	75.02	L69	N 00°30'00" E	74.99	L129	S 89°13'02" W	66.09	L189	S 78°01'00" E	76.90
L10	N 00°30'00" E	160.00	L70	N 89°30'00" W	173.44	L130	N 65°44'59" E	136.69	L190	S 00°47'00" E	247.19
L11	S 89°13'00" W	24.96	L71	N 00°30'00" W	75.00	L131	N 52°52'10" E	149.18	L191	N 79°34'00" E	61.15
L12	N 04°30'00" E	158.98	L72	N 09°13'51" E	22.35	L132	S 36°21'15" E	58.23	L192	N 79°34'00" E	76.07
L13	N 89°13'00" E	69.86	L73	N 80°46'09" W	167.23	L133	N 38°25'15" E	160.91	L193	N 79°34'00" E	68.56
L14	N 89°13'00" E	75.02	L74	N 00°30'00" W	60.00	L134	S 38°21'15" E	111.29	L194	N 00°47'00" W	229.49
L15	S 81°54'30" E	38.17	L75	N 09°13'51" E	78.85	L135	N 26°13'50" E	164.08	L195	S 87°00'45" E	75.16
L16	S 09°13'51" W	125.02	L76	N 80°46'09" W	153.71	L136	S 73°03'39" E	50.00	L196	S 87°00'46" E	75.16
L17	N 48°54'52" E	79.20	L77	N 00°30'00" W	80.00	L137	S 38°21'15" E	49.61	L197	S 87°00'46" E	75.16
L18	S 38°21'26" E	36.62	L78	N 09°13'51" E	100.79	L138	N 13°23'22" E	159.04	L198	S 00°47'00" E	200.10
L19	S 81°54'30" E	115.02	L79	N 81°54'30" W	5.74	L139	S 73°03'39" E	100.00	L199	S 00°47'00" E	211.85
L20	S 09°13'51" W	125.02	L80	N 00°30'00" W	115.54	L140	N 00°29'11" E	111.16	L200	S 89°24'28" E	132.30
L21	N 81°54'30" W	115.02	L81	S 14°28'29" E	86.17	L141	N 32°40'23" E	65.71	L201	S 00°35'32" W	256.81
L22	S 09°13'51" W	75.77	L82	N 75°31'31" E	149.35	L142	S 73°03'39" E	66.89	L202	N 89°13'00" E	30.17
L23	N 84°04'55" W	163.86	L83	N 00°30'00" W	108.54	L143	S 89°13'01" W	122.80			
L24	S 05°55'05" W	29.68	L84	S 14°28'29" E	72.88	L144	S 00°10'00" E	112.47			
L25	S 00°30'00" W	33.79	L85	N 76°13'03" E	167.94	L145	N 89°50'00" E	130.38			
L26	S 89°30'00" W	120.02	L86	N 00°30'00" W	77.00	L146	N 39°02'55" W	210.52			
L27	S 35°04'03" E	75.05	L87	S 00°29'29" W	22.50	L147	N 89°28'02" E	185.78			
L28	S 05°55'03" W	40.32	L88	S 89°30'31" E	171.59	L148	N 02°21'36" E	149.77			
L29	S 00°30'00" W	100.02	L89	N 00°30'00" W	60.00	L149	S 89°50'00" W	161.21			
L30	S 89°30'00" W	120.02	L90	S 00°29'29" W	58.87	L150	S 00°07'44" E	203.92			
L31	S 00°30'00" W	100.02	L91	S 89°30'31" E	151.17	L151	N 89°28'02" E	53.55			
L32	S 89°30'00" W	99.97	L92	S 00°30'00" W	64.00	L152	N 00°10'00" W	61.89			
L33	N 00°30'00" E	48.87	L93	N 71°27'27" E	144.87	L153	S 89°50'00" W	159.83			
L34	S 47°17'35" W	101.42	L94	S 00°30'00" E	111.00	L154	S 00°07'44" E	76.00			
L35	N 89°13'00" E	85.00	L95	N 34°50'25" E	210.31	L155	N 00°10'00" W	76.00			
L36	S 05°55'05" W	146.17	L96	N 89°28'02" E	40.30	L156	S 89°50'00" W	159.88			
L37	N 89°13'00" E	165.00	L97	S 00°30'00" E	159.60	L157	S 00°07'44" E	76.00			
L38	S 34°34'33" E	187.36	L98	S 89°30'00" W	5.21	L158	N 00°10'00" W	76.00			
L39	S 75°49'38" E	166.56	L99	N 00°30'00" W	159.49	L159	S 89°50'00" W	159.93			
L40	S 00°30'00" W	150.00	L100	N 89°28'02" E	164.46	L160	S 00°07'44" E	76.00			
L41	S 00°30'00" W	45.01	L101	S 89°30'00" W	75.26	L161	N 00°10'00" W	26.11			
L42	S 89°30'00" E	160.00	L102	N 00°30'00" W	159.44	L162	S 66°37'27" W	180.26			
L43	S 00°30'00" W	100.00	L103	N 89°28'02" E	75.26	L163	S 00°07'44" E	124.74			
L44	N 48°49'48" E	236.21	L104	S 89°30'00" W	29.54	L164	S 28°09'11" W	177.52			
L45	S 00°30'00" W	200.00	L105	N 27°39'37" W	187.17	L165	N 89°13'00" E	112.67			
L46	N 08°05'00" E	162.47	L106	N 89°28'02" E	144.65	L166	S 00°07'44" E	120.48			
L47	N 89°28'02" E	195.01	L107	N 44°02'23" W	148.82	L167	S 17°54'46" E	156.68			
L48	S 00°30'00" W	28.74	L108	N 24°23'32" E	76.46	L168	N 89°13'00" E	186.52			
L49	S 89°30'00" W	66.05	L109	N 85°11'15" W	149.55	L169	S 57°48'54" E	162.72			
L50	N 00°30'00" W	159.86	L110	S 03°20'52" W	80.32	L170	N 00°29'11" E	90.00			
L51	N 89°28'02" E	100.00	L111	S 47°26'12" W	82.10	L171	S 89°13'00" W	126.49			
L52	S 89°30'00" W	75.08	L112	S 52°13'45" W	131.41	L172	S 00°10'00" E	34.13			
L53	N 00°30'00" W	159.82	L113	S 03°20'52" W	60.00	L173	S 89°13'01" W	123.45			
L54	N 89°28'02" E	75.08	L114	S 38°21'15" E	99.98	L174	N 00°29'11" E	160.01			
L55	S 89°30'00" W	75.10	L115	S 13°40'58" W	150.78	L175	N 00°29'11" E	220.00			
L56	N 00°30'00" W	159.78	L116	S 82°20'14" W	30.56	L176	S 33°04'44" W	220.77			
L57	N 89°28'02" E	75.10	L117	S 38°21'15" E	119.14	L177	S 67°12'28" W	223.00			
L58	S 89°30'00" W	43.53	L118	N 89°30'00" E	78.89	L178	N 79°35'49" E	104.80			
L59	N 00°30'00" W	142.83	L119	S 00°29'29" W	73.50	L179	N 00°29'11" E	30.02			
L60	N 89°28'02" E	79.51	L120	S 82°20'14" W	134.44	L180	S 89°13'00" W	225.50			

CURVE#	RADIUS	LENGTH	CHORD	CHORD BEARING	DELTA ANGLE	TANGENT
C1	700.00	56.16	56.15	S 88°29'06" E	04°35'49"	28.10
C2	700.00	52.27	52.26	S 84°02'51" E	04°16'41"	26.15
C3	380.00	7.93	7.93	N 08°38'00" E	01°11'42"	3.96
C4	380.00	49.98	49.94	N 04°16'05" E	07°32'09"	25.03
C5	65.00	49.02	47.86	S 21°06'12" E	43°12'25"	25.74
C6	65.00	46.94	45.93	S 63°23'40" E	41°22'31"	24.55
C7	65.00	45.94	44.99	N 75°40'16" E	40°29'38"	23.98
C8	65.00	46.80	45.79	N 34°47'55" E	41°15'05"	24.47
C9	65.00	15.51	15.47	N 07°20'11" E	13°40'22"	7.79
C10	65.00	0.26	0.26	N 00°23'12" E	00°13'36"	0.13
C11	65.00	47.02	46.00	N 20°26'54" W	41°26'36"	24.59
C12	65.00	46.23	45.26	S 61°32'36" E	40°44'47"	24.14
C13	65.00	9.74	9.73	S 86°12'30" E	08°35'00"	4.88
C14	60.00	40.81	40.03	S 65°29'10" E	38°58'20"	21.23
C15	60.00	46.63	45.46	N 72°45'50" E	44°31'40"	24.56
C16	60.00	41.81	40.97	S 30°32'20" W	39°55'19"	21.79
C17	60.00	57.15	55.02	S 16°42'40" E	54°34'40"	30.95
C18	320.00	48.76	48.72	N 04°51'56" E	08°43'51"	24.43
C19	800.00	129.24	129.10	S 86°32'11" E	09°15'22"	64.76
C20	800.00	124.75	124.62	N 84°22'06" E	08°56'04"	62.50
C21	320.00	3.87	3.87	S 14°07'43" E	00°41'32"	1.93
C22	320.00	79.72	79.52	S 06°38'44" E	14°16'26"	40.07
C23	65.00	24.54	24.40	N 52°11'17" E	21°38'03"	12.42
C24	65.00	67.97	64.91	N 11°24'51" E	59°54'48"	37.46
C25	65.00	41.54	40.84	N 36°51'04" W	36°37'02"	21.51
C26	65.00	40.09	39.46	S 72°49'48" E	35°20'25"	20.71
C27	65.00	30.81	30.52	N 75°55'11" E	27°09'37"	15.70
C28	65.00	46.68	45.68	S 25°23'11" W	41°08'53"	24.40
C29	65.00	48.31	47.21	S 16°28'45" E	42°35'00"	25.33
C30	65.00	43.73	42.91	S 57°02'40" E	38°32'49"	22.73
C31	65.00	16.09	16.05	S 83°24'32" E	14°10'56"	8.09
C32	380.00	54.08	54.03	S 03°35'08" E	08°09'15"	27.09
C33	380.00	45.18	45.15	S 11°04'08" E	06°48'44"	22.62
C34	700.00	70.37	70.34	N 82°28'36" E	05°45'35"	35.21
C35	700.00	47.17	47.16	N 87°17'13" E	03°51'38"	23.59
C36	285.00	110.31	109.62	N 12°52'37" W	22°10'35"	55.85
C37	285.00	65.49	65.34	N 30°32'52" W	13°09'56"	32.89
C38	285.00	71.87	71.68	N 44°21'18" W	14°26'55"	36.13
C39	285.00	60.64	60.52	S 57°40'27" E	12°11'24"	30.43
C40	285.00	63.88	63.74	S 70°11'24" E	12°50'29"	32.07
C41	285.00	64.18	64.05	S 83°03'43" E	12°54'10"	32.23
C42	285.00	6.32	6.32	N 89°51'06" E	01°16'11"	3.16
C43	70.00	50.59	49.50	N 71°39'20" E	41°24'31"	26.46
C44	70.00	48.25	47.30	S 31°12'23" W	39°29'24"	25.13
C45	70.00	14.21	14.18	S 05°38'51" W	11°37'41"	7.13
C46	70.00	28.36	28.16	S 11°46'17" E	23°12'33"	14.37
C47	70.00	47.00	46.12	S 42°36'41" E	38°28'16"	24.43
C48	70.00	56.28	54.78	S 84°52'48" E	48°03'57"	29.76
C49	70.00	48.75	47.77	N 52°08'10" E	39°54'08"	25.41
C50	70.00	39.53	39.00	N 16°00'33" E	32°21'06"	20.30
C51	225.00	4.99	4.99	N 89°51'06" E	01°16'11"	2.49
C52	225.00	125.29	123.68	S 73°33'40" E	31°54'17"	64.39
C53	225.00	132.				